

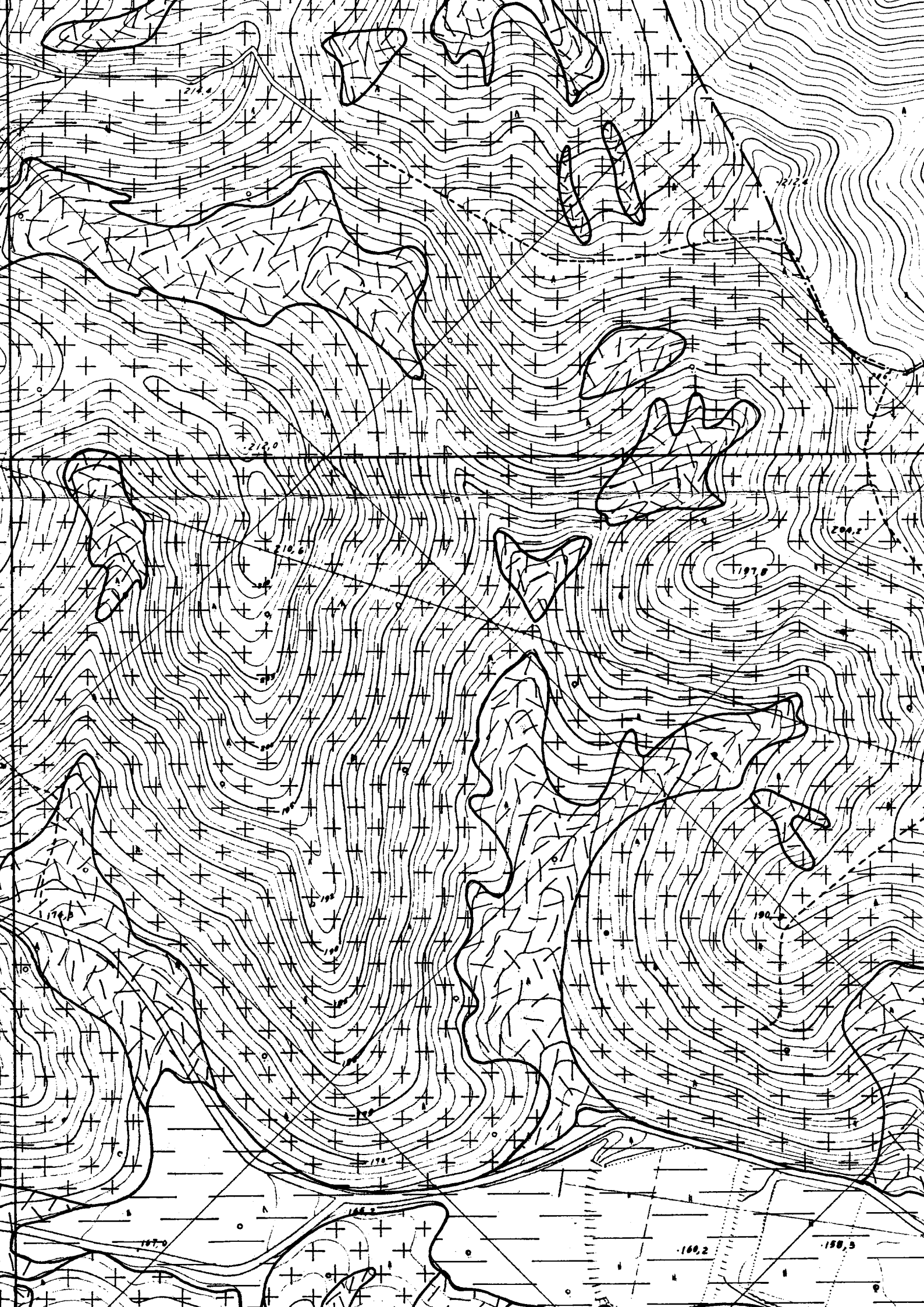
飯盛霊園全体の地盤調査委託

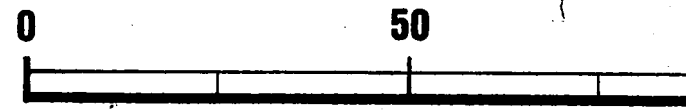
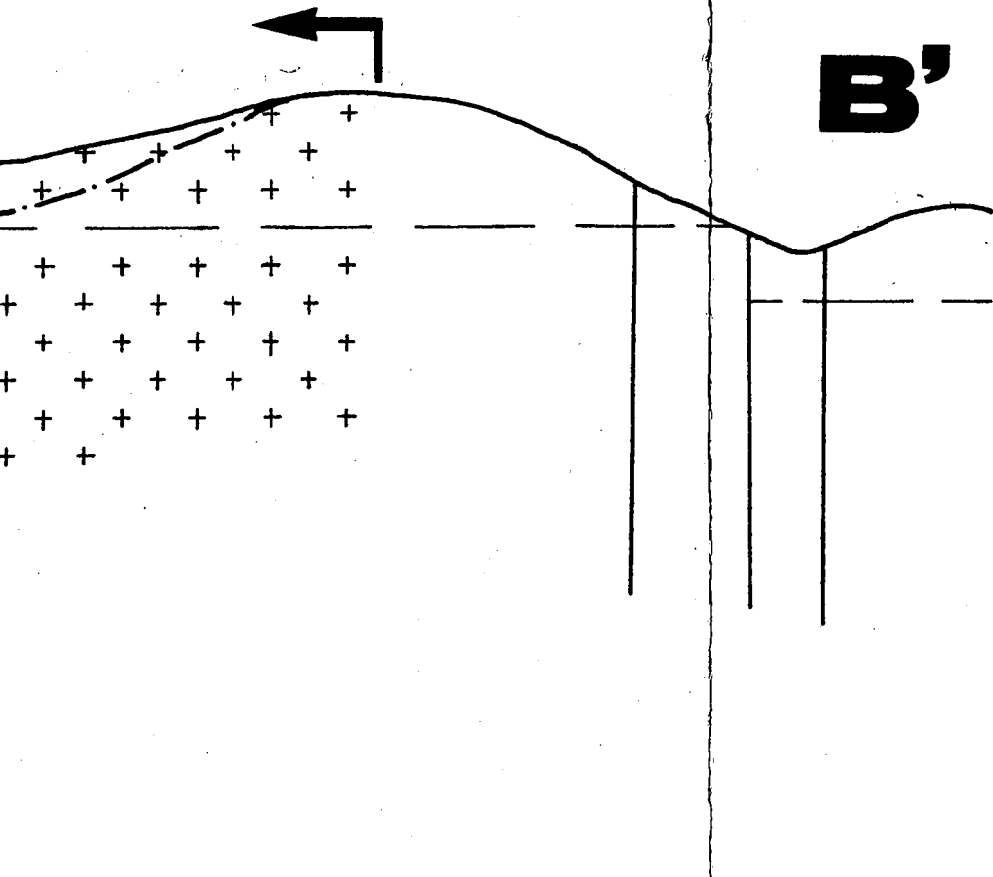
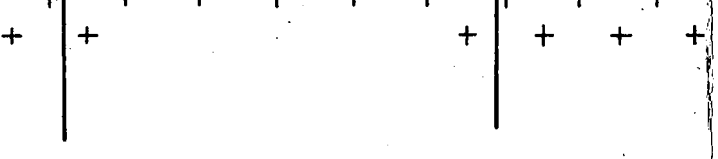
報告書

本報告書に収められた各種の地盤条件図は、霊地を長期的に維持管理するための基礎資料として、作成したものである。

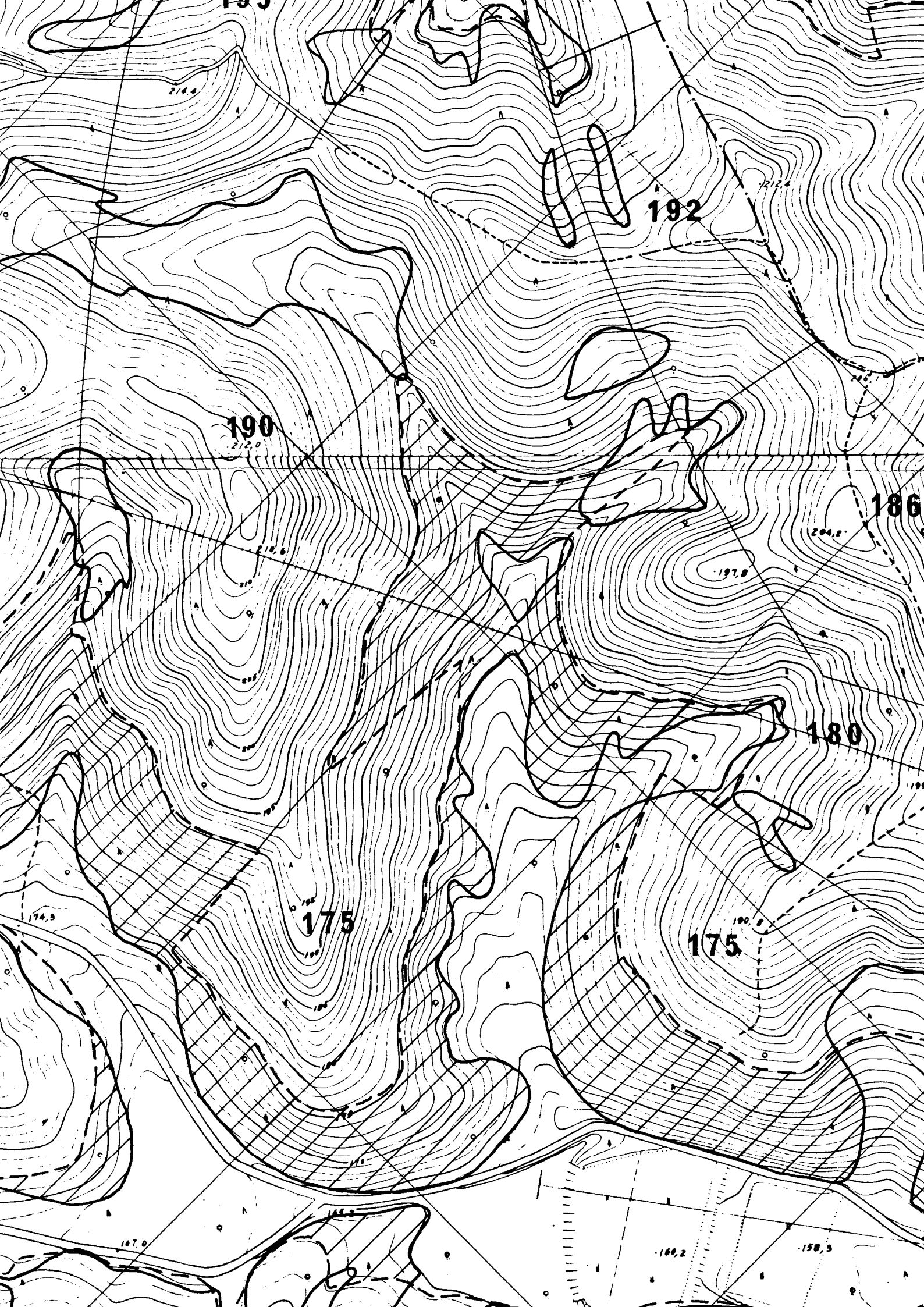
図面リスト

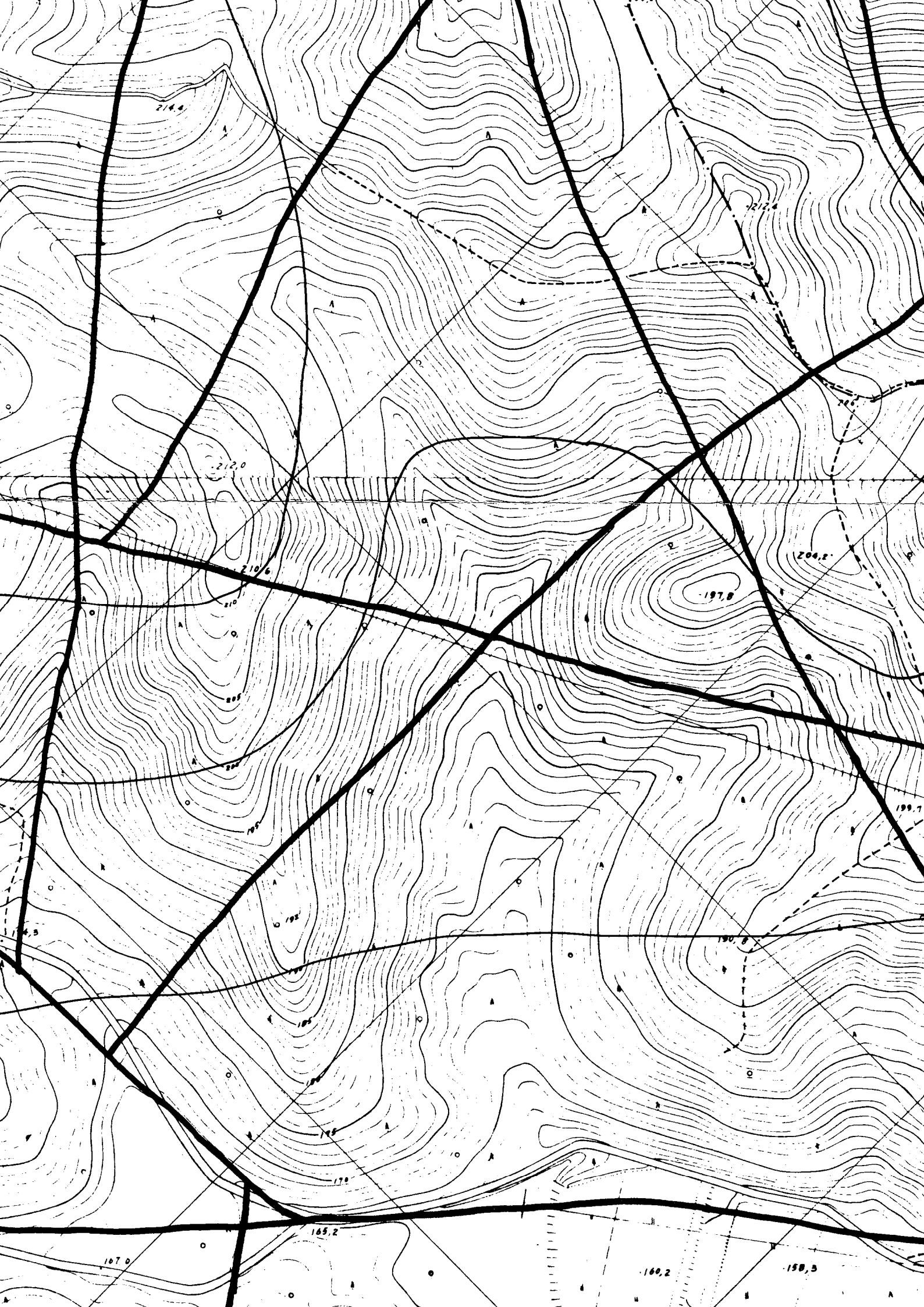
- 図 1：地質図
- 図 2：地質断面図
- 図 3：風化岩構造図
- 図 4：線構造分布図
- 図 5：高度分布図
- 図 6：急斜面区分図
- 図 7：盛土高分布図
- 図 7'：同 上
- 図 8：既存資料ボーリング地点図
- 図 9：ボーリング柱状図集

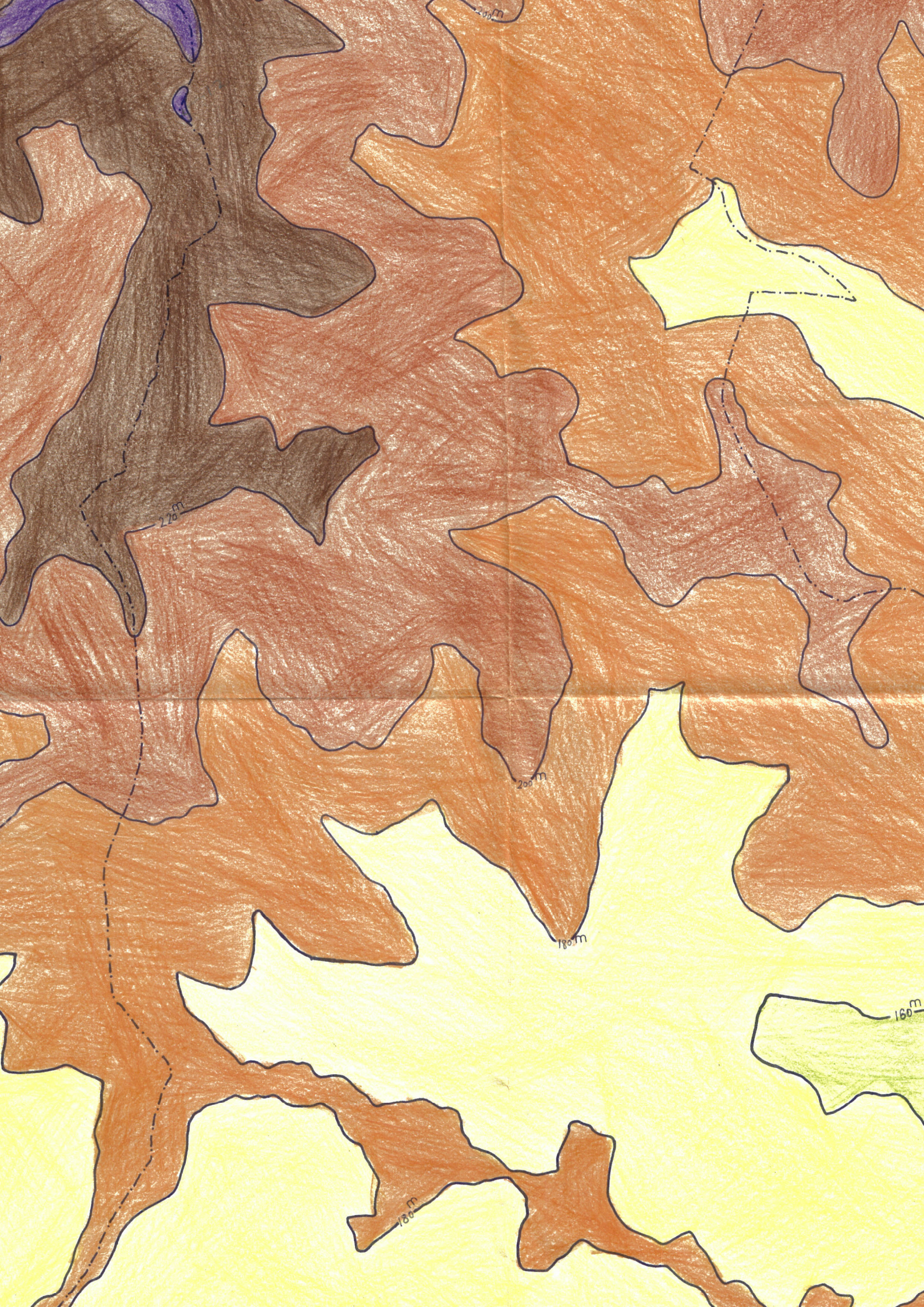




1 : 1,000







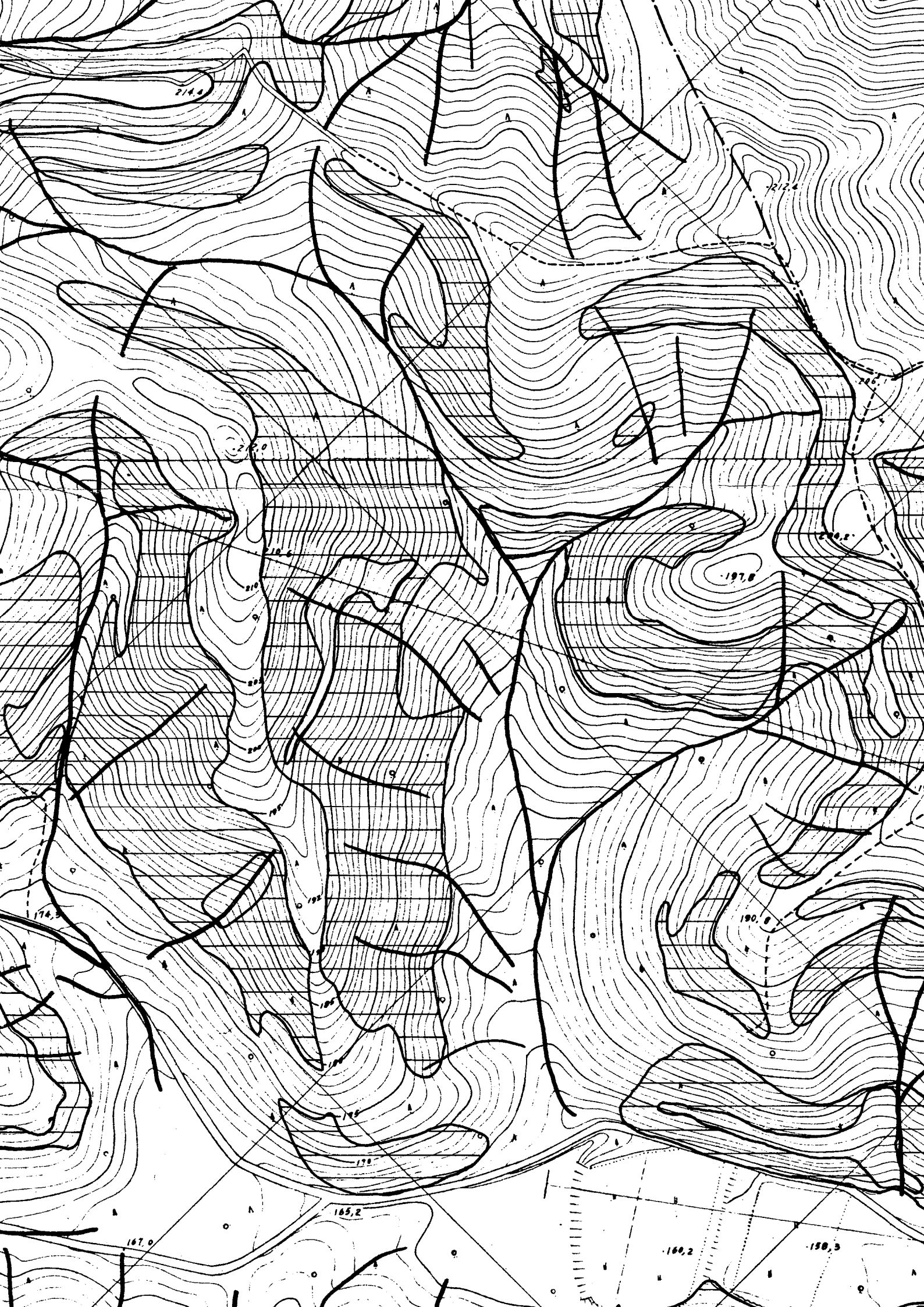
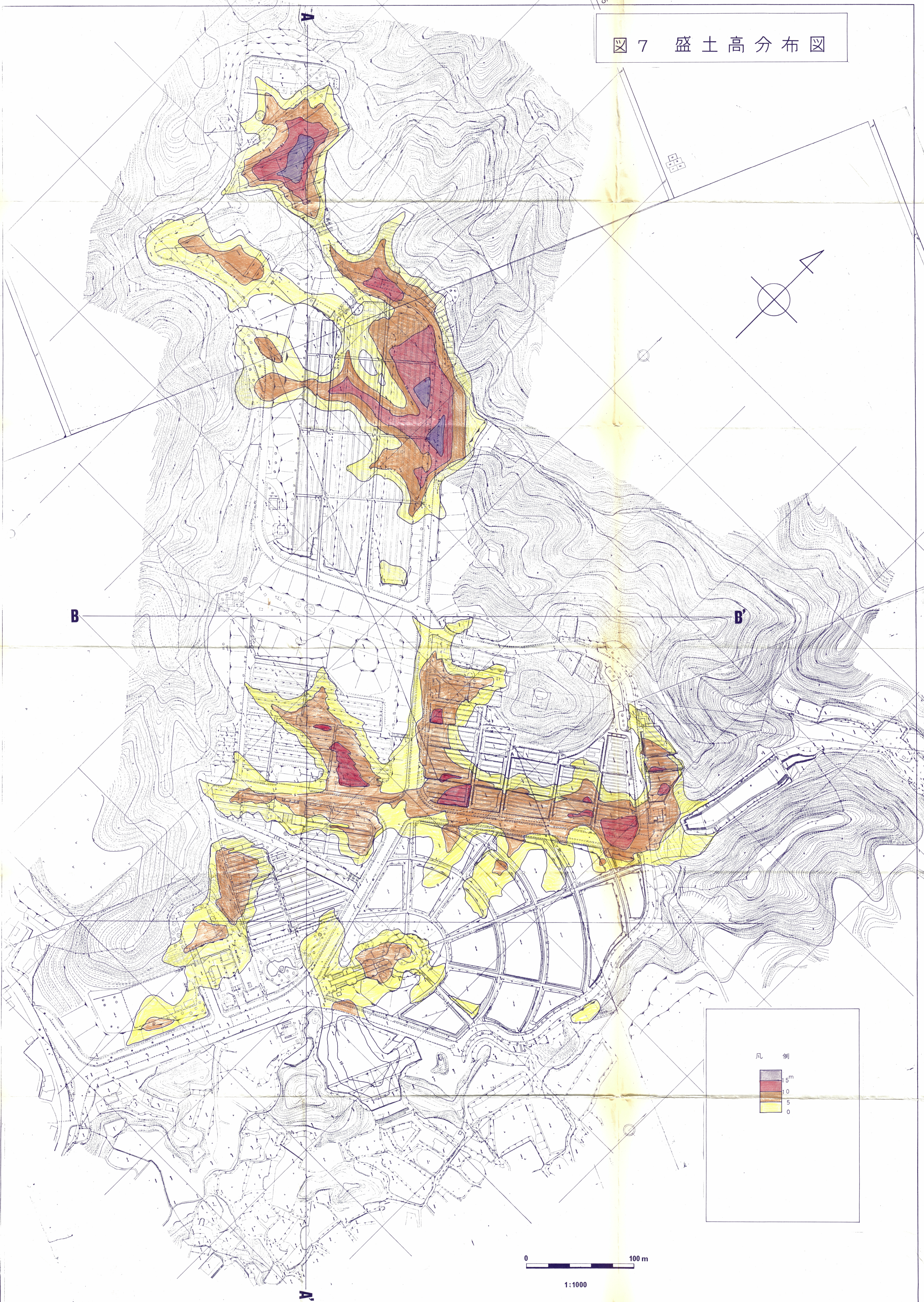


图7 盛土高分布图



凡例

5m
10
5
0

0 100 m

1:1000

図 8 既存資料ポーリング地点図



0 100 m

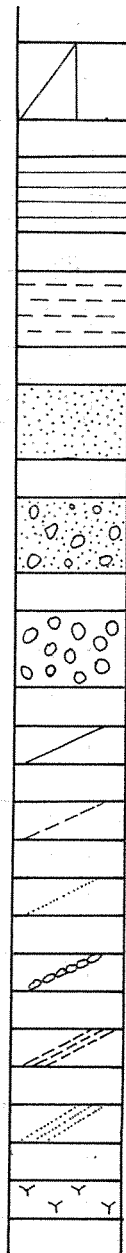
1:1000

飯 盛 壺 園

ホーリング柱状図集

— 図 9 —

凡 例



盛 土

粘 土

シルト

砂

砂 礫

礫

粘土混り

シルト混り

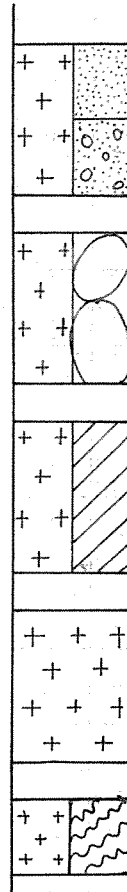
砂 混り

礫 混り

シルト質

砂 質

植物質



風化花崗岩
(マサ)

風化花崗岩
(玉石)

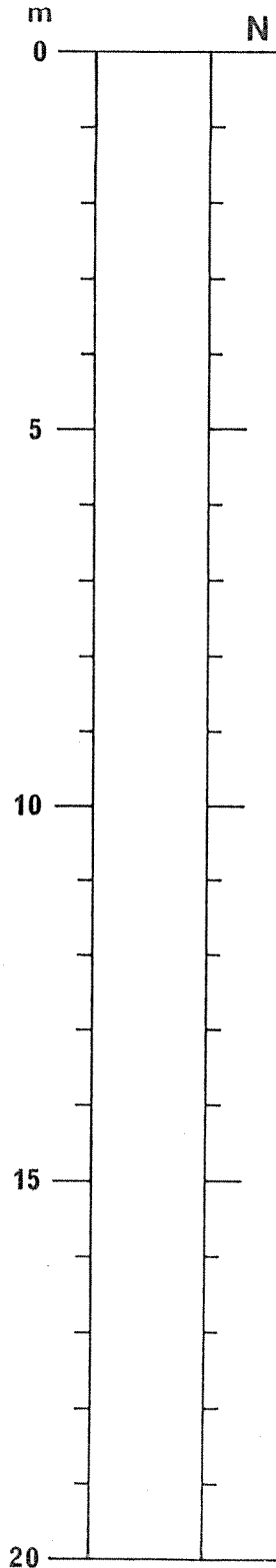
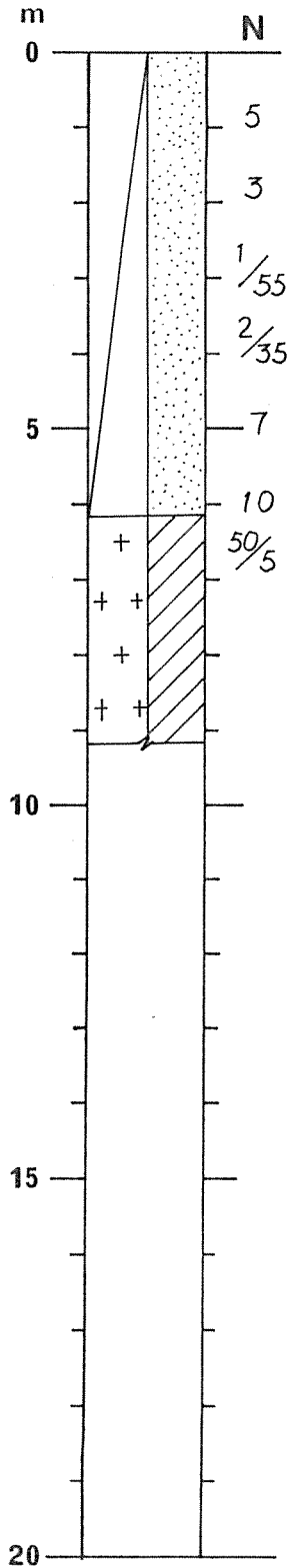
風化花崗岩
(軟岩)

花崗岩
(中・硬岩)

破 砕

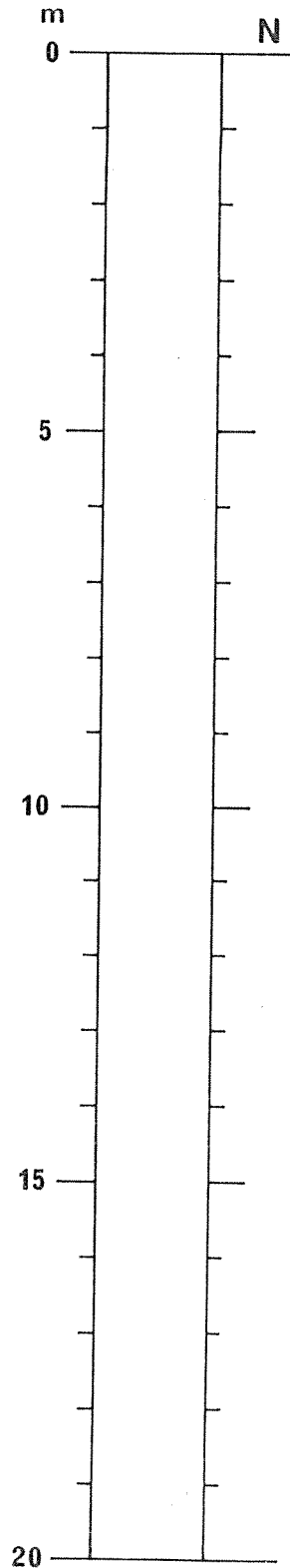
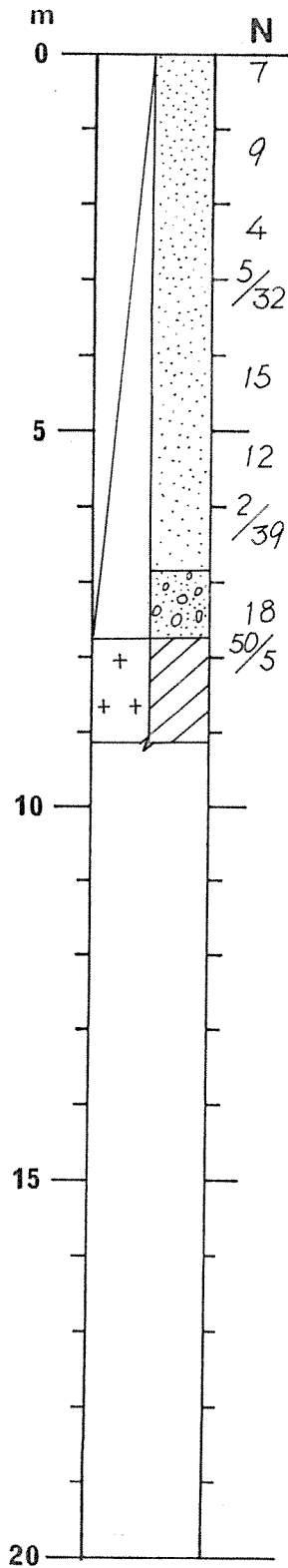
Mesh C 2
 Bo. 1
 Alt. 209.30 m
 Org. 7 NO.1
 G.W. GL.- 3.30 m

Mesh
 Bo.
 Alt.
 Org.
 G.W. GL.- m



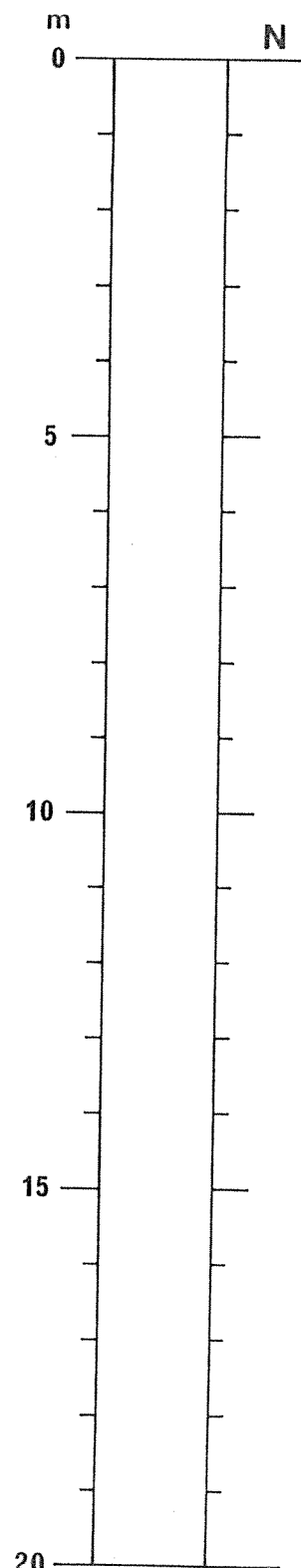
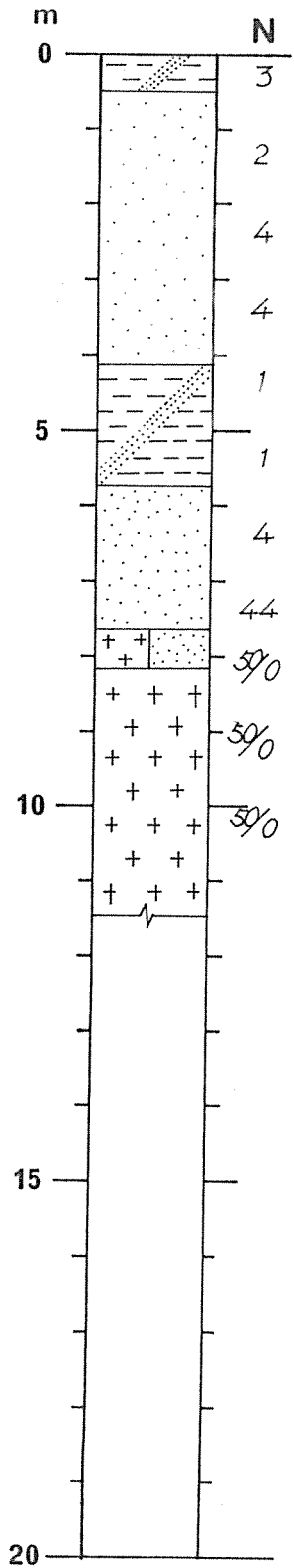
Mesh C 3
 Bo. 1
 Alt. 203.00m
 Org. 7 NO. 2
 G.W. GL.- m

Mesh
 Bo.
 Alt.
 Org.
 G.W. GL.- m



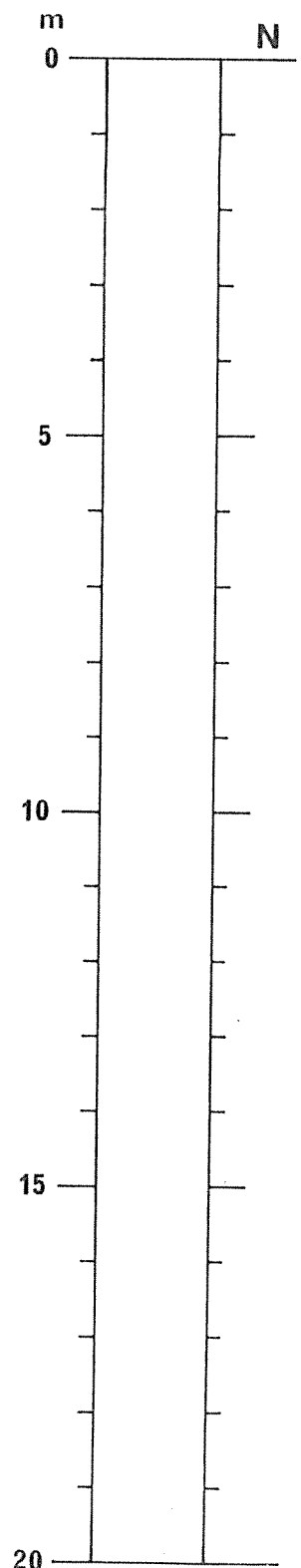
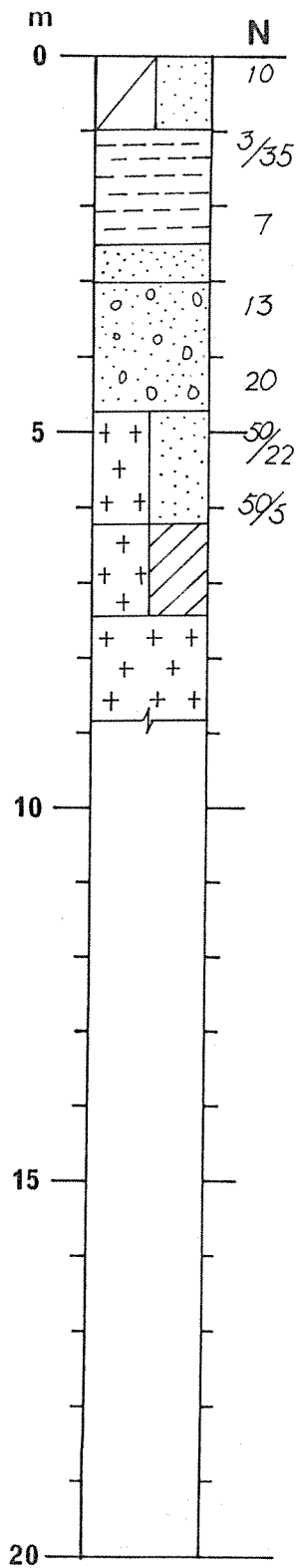
Mesh C 5
 Bo. 1
 Alt. 175.2 m
 Org. 5 NO.3-1
 G.W. GL.- 3.60 m

Mesh
 Bo.
 Alt.
 Org.
 G.W. GL.- m



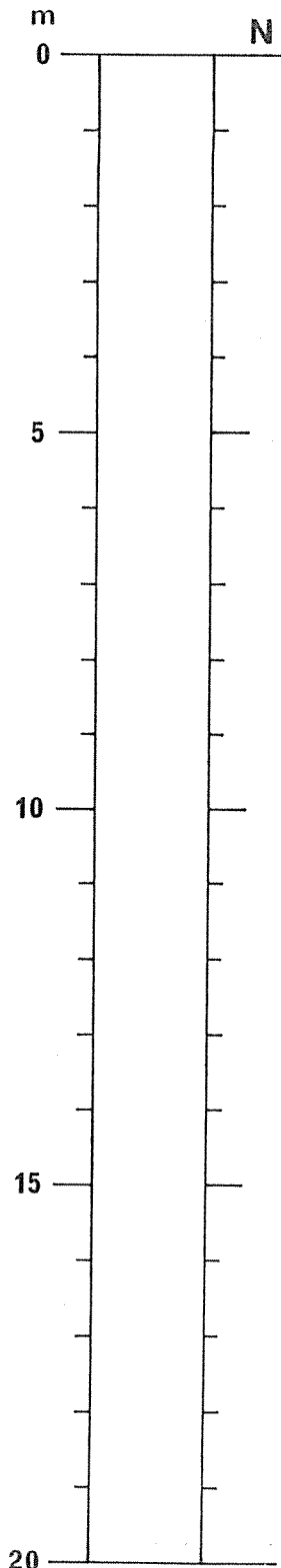
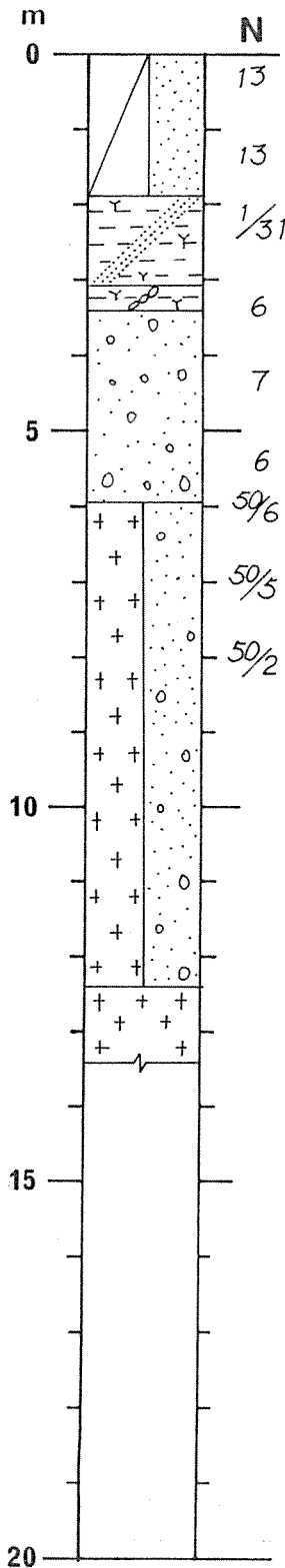
Mesh C 9
 Bo. 1
 Alt. 139.01m
 Org. 6 NO.3
 G.W. GL.- 1.00 m

Mesh _____
 Bo. _____
 Alt. _____
 Org. _____
 G.W. GL.- _____ m

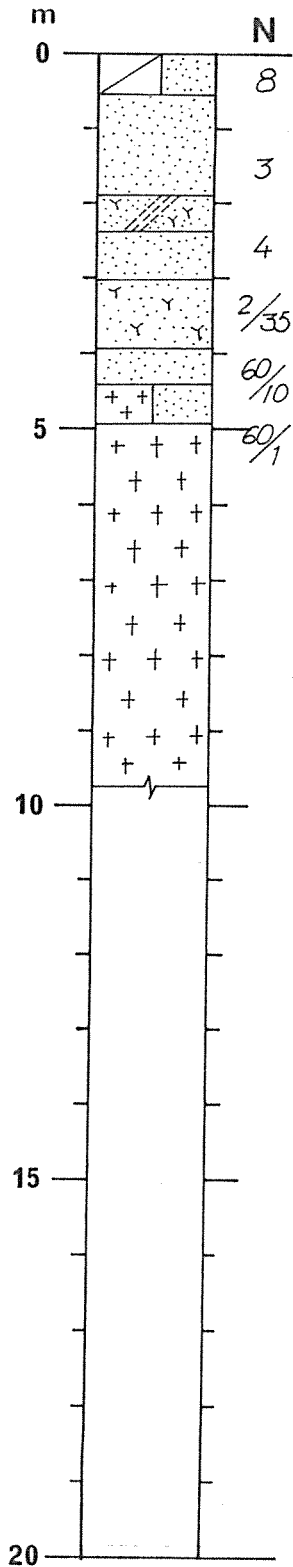


Mesh C 10
 Bo. 1
 Alt. 136 58 m
 Org. 6 NO.10'
 G.W. GL. - 150 m

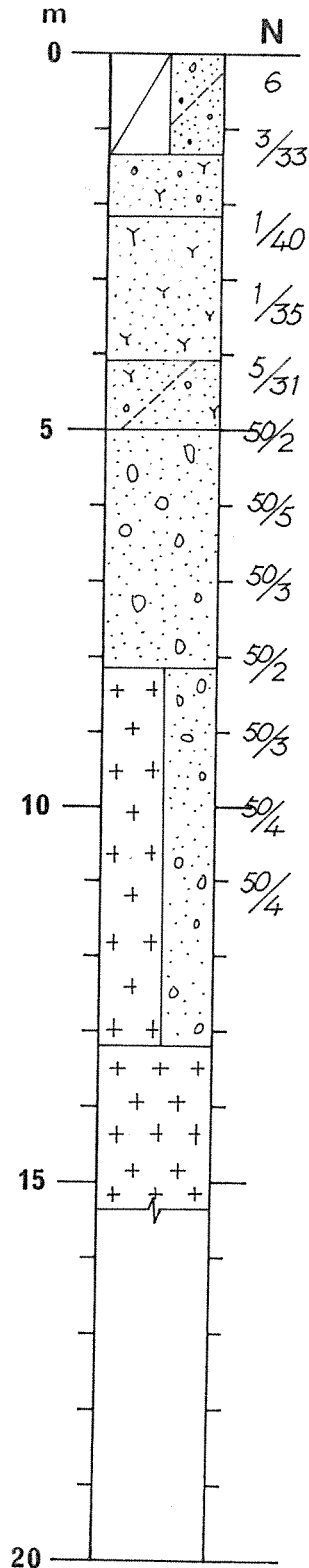
Mesh _____
 Bo. _____
 Alt. _____
 Org. _____
 G.W. GL. - _____ m



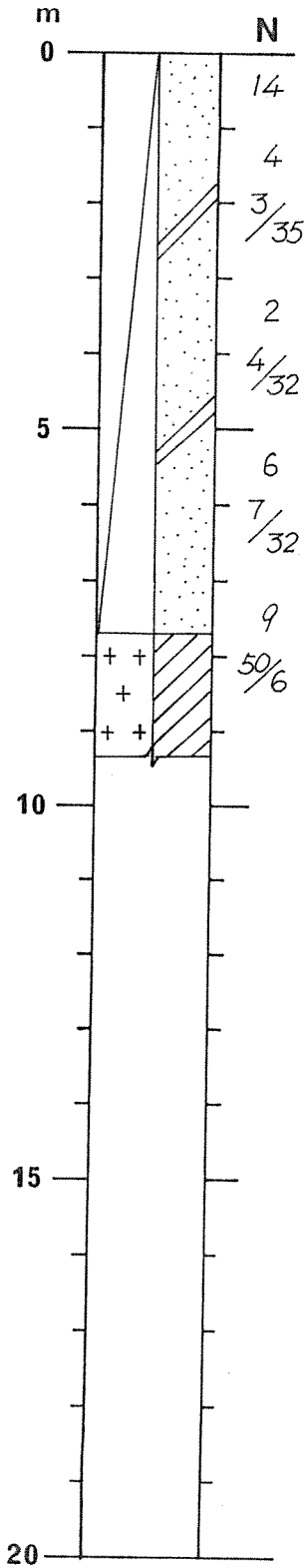
Mesh C 11
 Bo. 1
 Alt. 132.77 m
 Org. 6 NO.4'
 G.W. GL.- 0.90 m



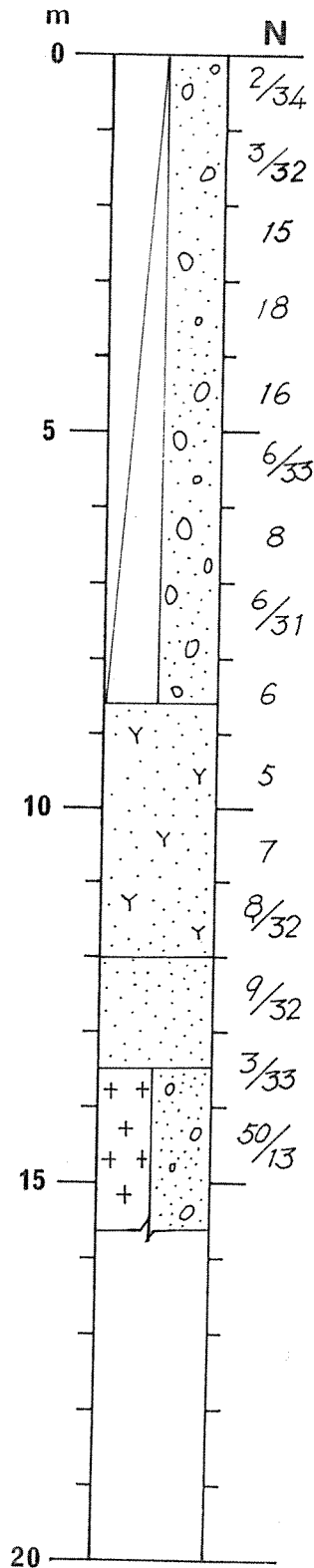
Mesh C 11
 Bo. 2
 Alt. 132.83 m
 Org. 6 NO.4
 G.W. GL.- 0.08 m



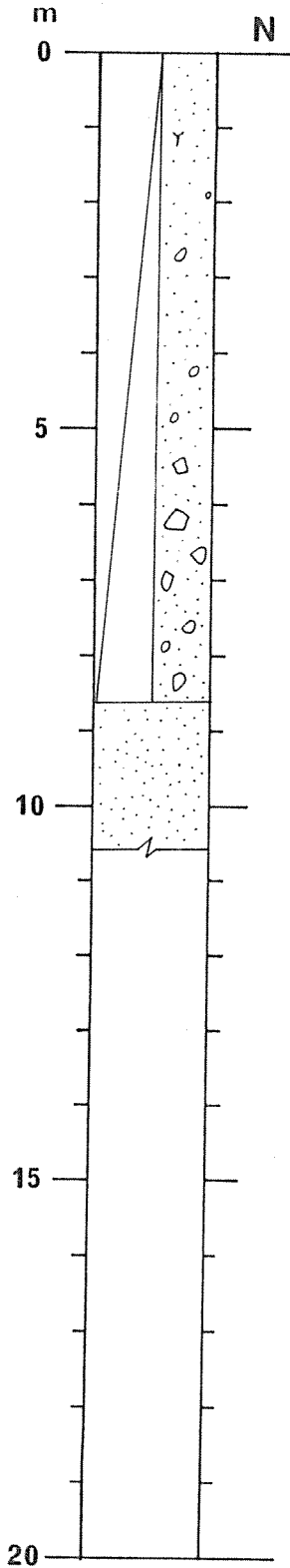
Mesh D 2
 Bo. 1
 Alt. 214.05 m
 Org. 7 NO.3
 G.W. GL.- m



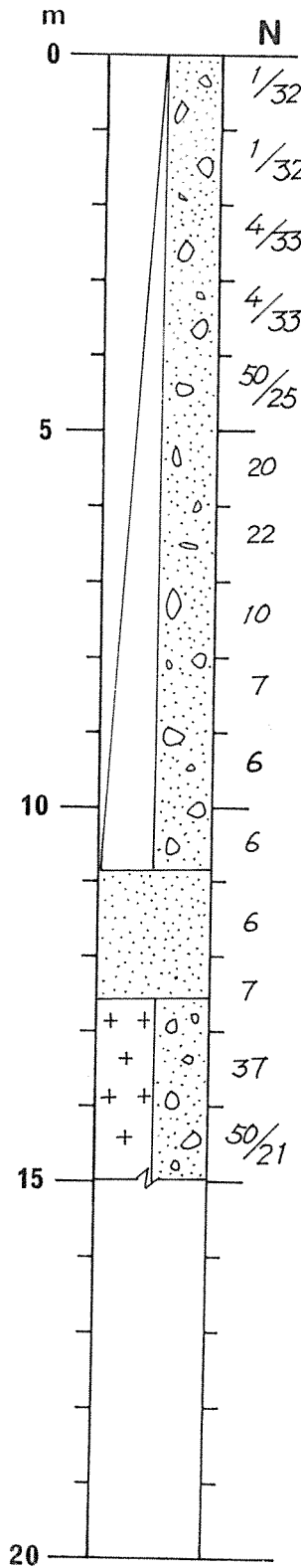
Mesh D 2
 Bo. 3
 Alt. 227.40 m
 Org. 8 NO.4
 G.W. GL.- 4.70 m



Mesh D 2
 Bo. 4
 Alt. 127.40 m
 Org. 8 NO.3
 G.W. GL.- 4.70 m

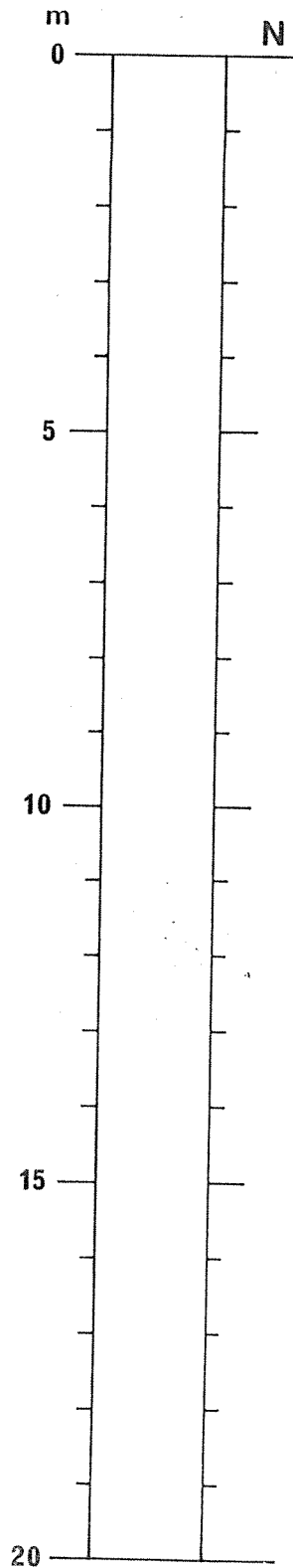
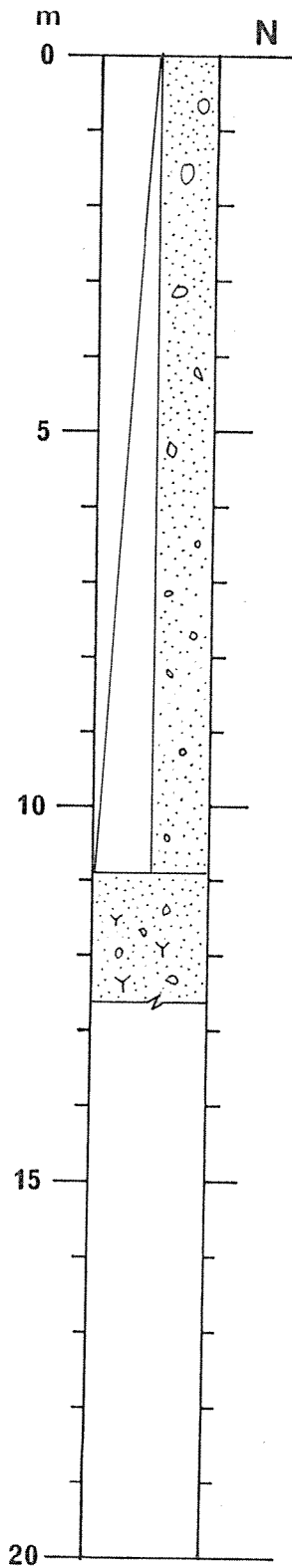


Mesh D 2
 Bo. 5
 Alt. 235.00 m
 Org. 8 NO.2
 G.W. GL.- 4.40 m



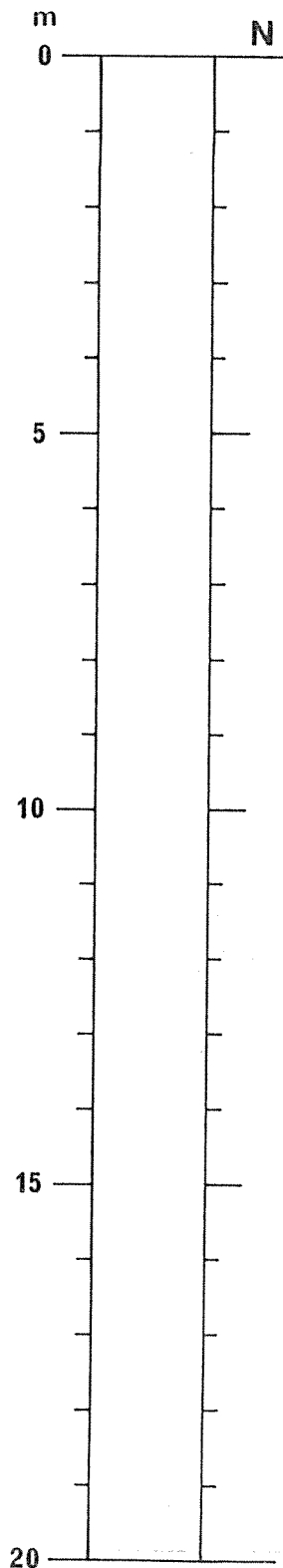
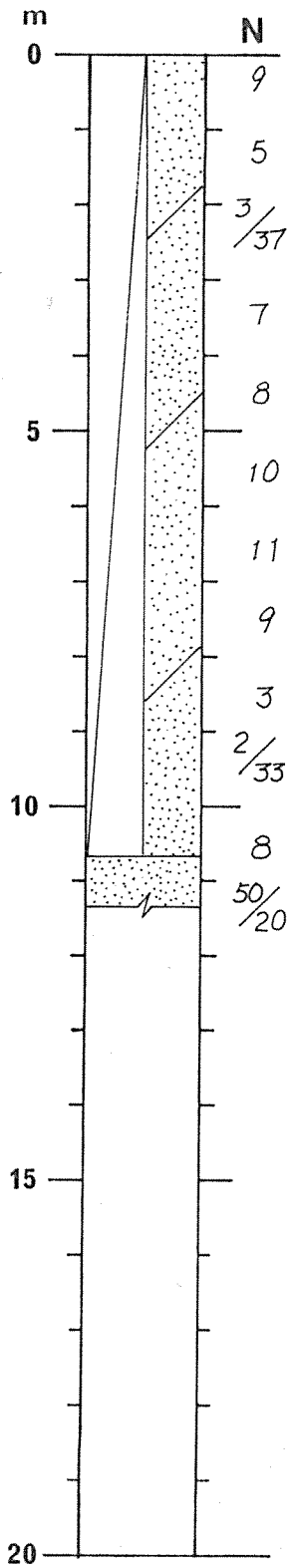
Mesh D 2
 Bo. 6
 Alt. 235.0 m
 Org. 8 NO.1
 G.W. GL.- 4.40 m

Mesh
 Bo.
 Alt.
 Org.
 G.W. GL.- m



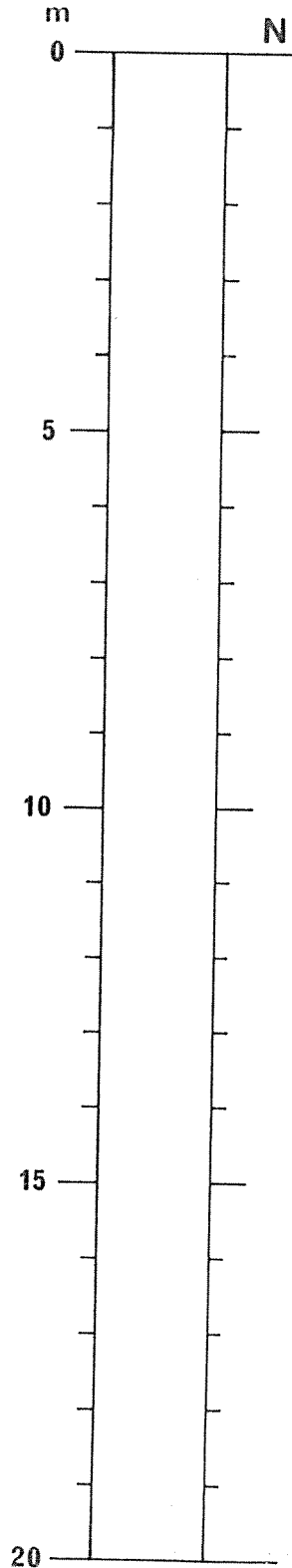
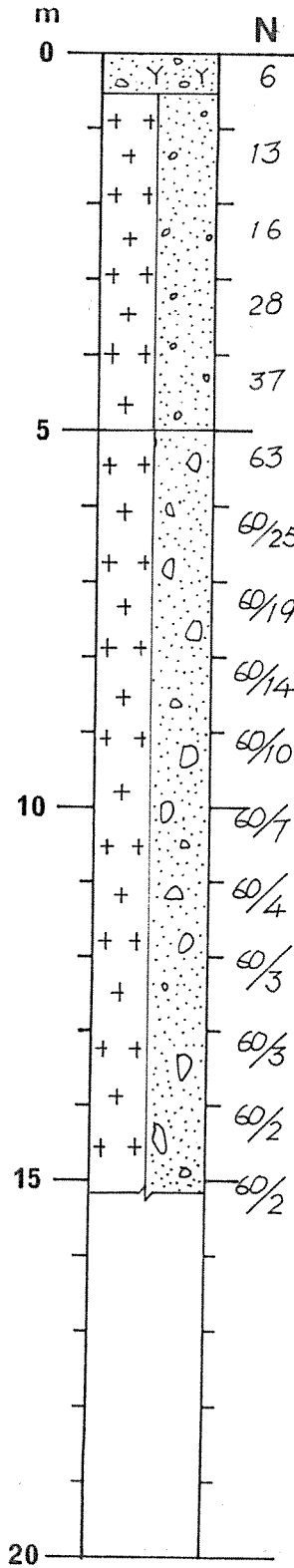
Mesh D 3
 Bo. 1
 Alt. 208.75 m
 Org. 7 NO.4
 G.W. GL.- m

Mesh
 Bo.
 Alt.
 Org.
 G.W. GL.- m

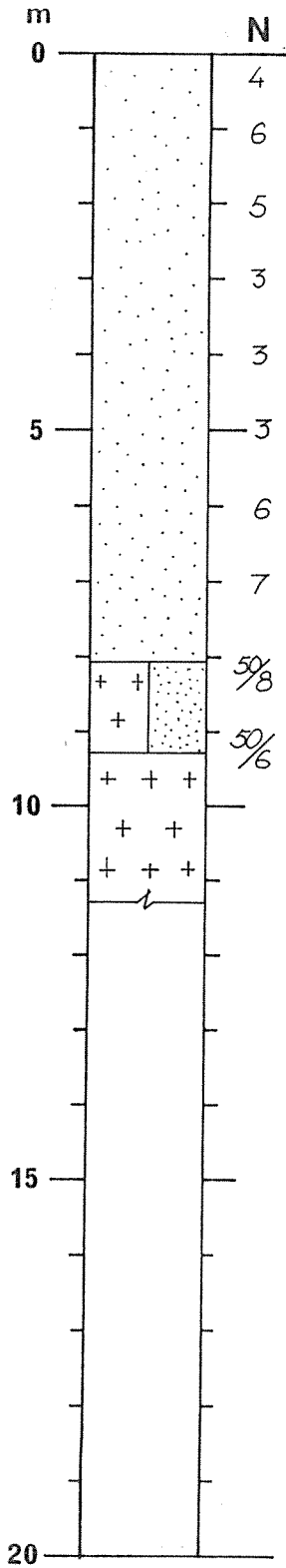


Mesh D 7
 Bo. 1
 Alt. 196.1 m
 Org. 1 NO.2
 G.W. GL.- m

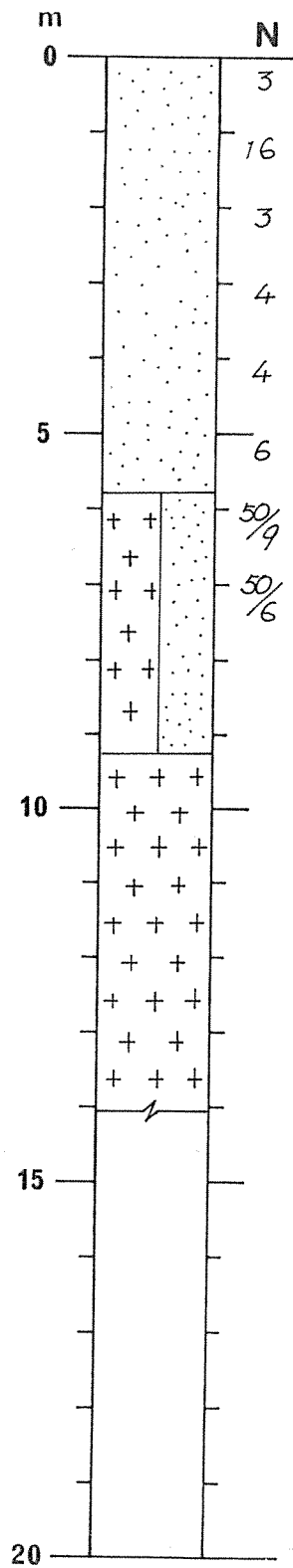
Mesh
 Bo.
 Alt.
 Org.
 G.W. GL.- m



Mesh D 9
 Bo. 1
 Alt. 141 m
 Org. 15 NO.1
 G.W. GL.- m

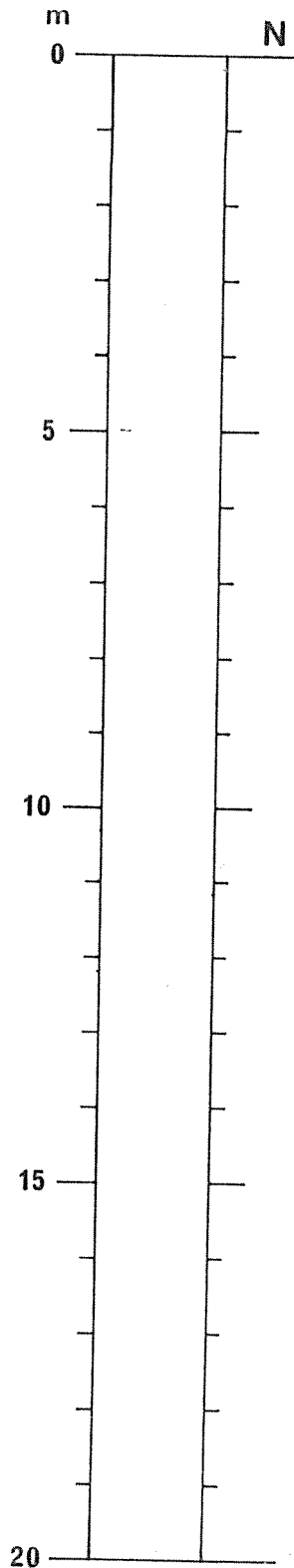
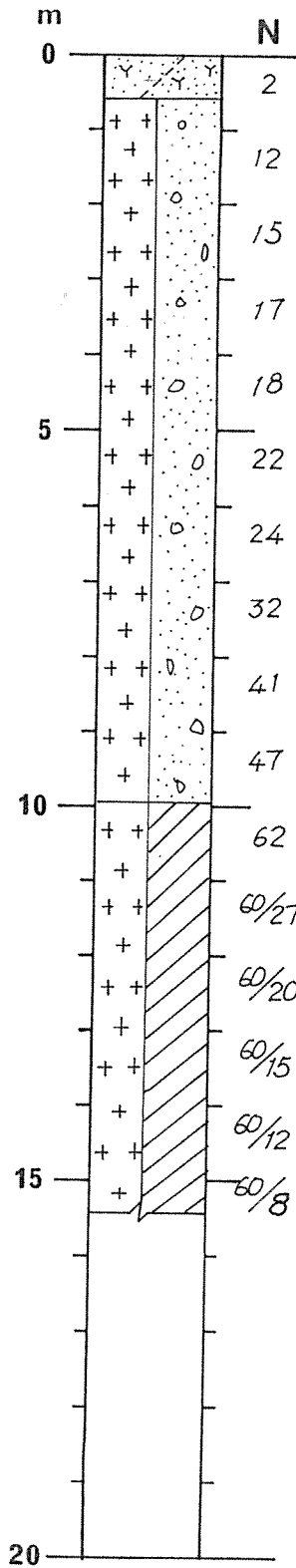


Mesh D 9
 Bo. 2
 Alt. 141 m
 Org. 15 NO.2
 G.W. GL.- m

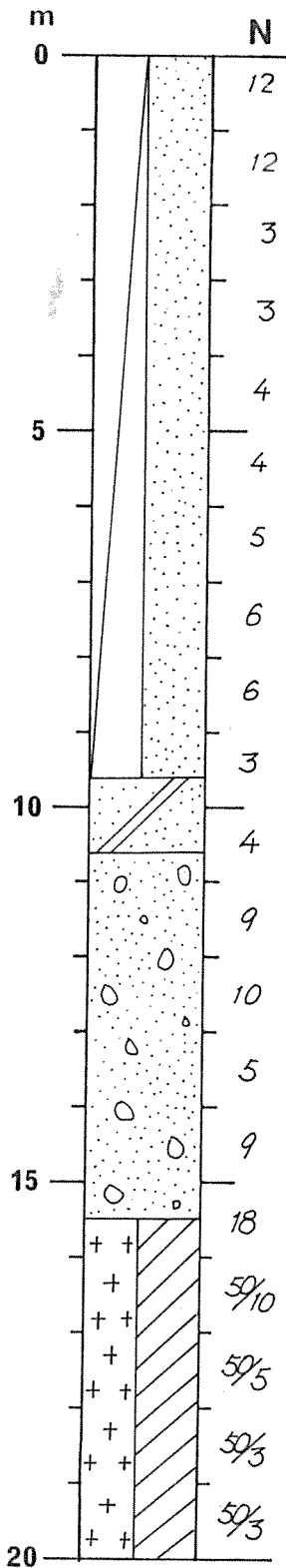


Mesh D 10
 Bo. 1
 Alt. 172.2 m
 Org. 1 NO.1
 G.W. GL.- m

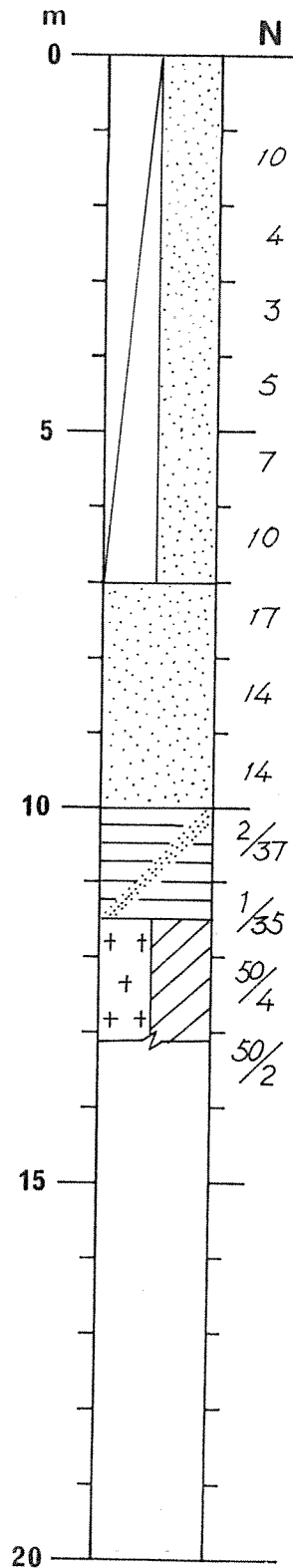
Mesh
 Bo.
 Alt.
 Org.
 G.W. GL.- m



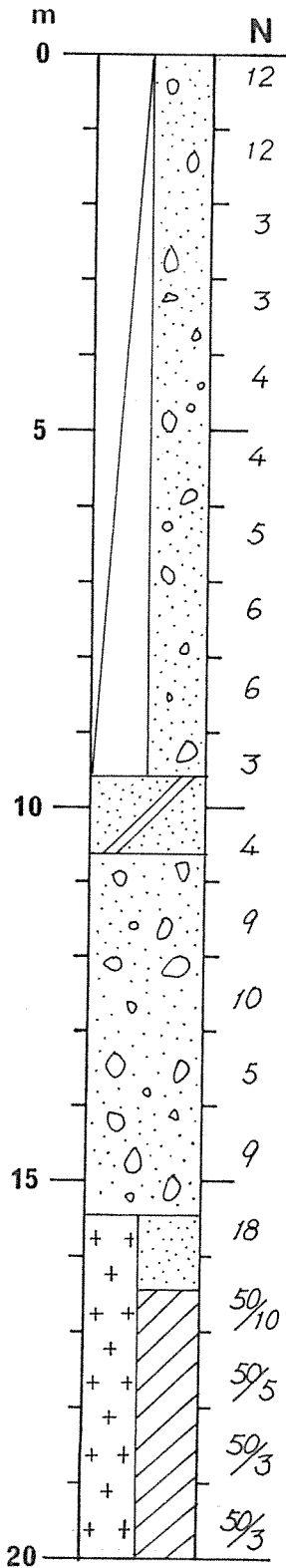
Mesh E 8
 Bo. 1
 Alt. 161 m
 Org. 11 NO.1
 G.W. GL. - m



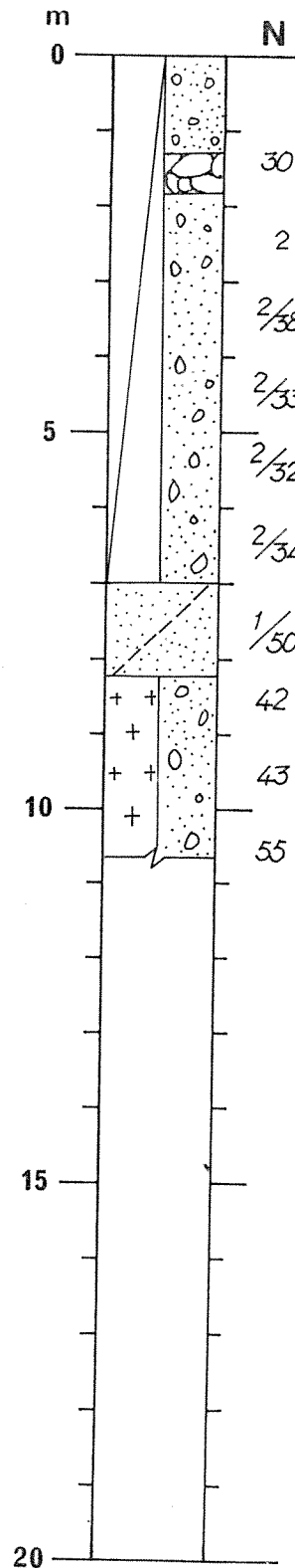
Mesh E 8
 Bo. 2
 Alt. 160.10 m
 Org. 13 NO.2
 G.W. GL. - 10.05 m



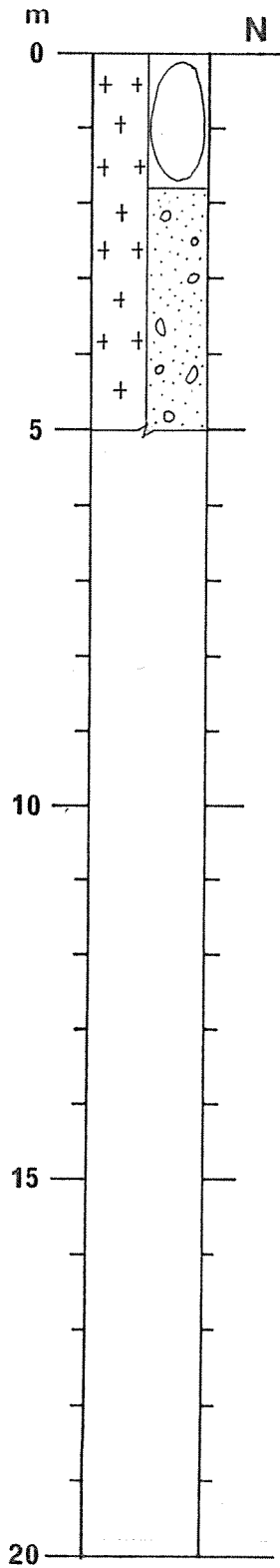
Mesh E 9
 Bo. 1
 Alt. 161 m
 Org. 15 NO.3
 G.W. GL.- 7.00 m



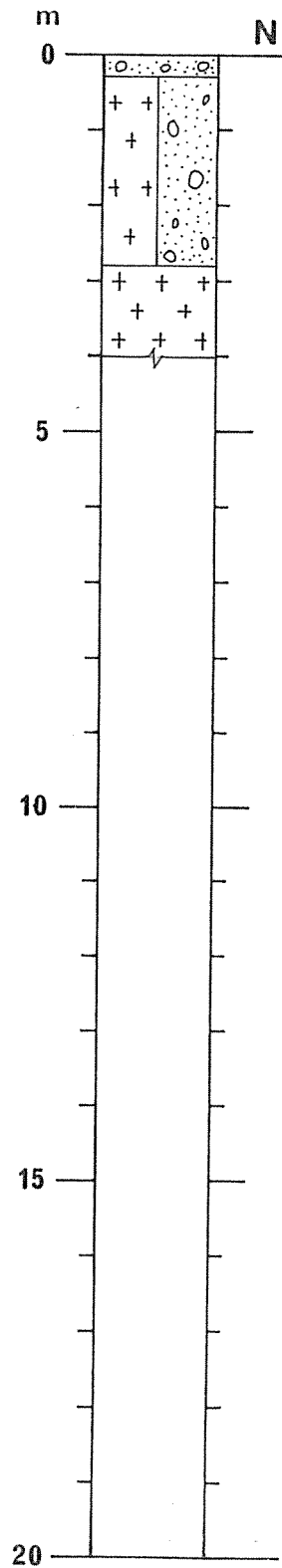
Mesh E 9
 Bo. 2
 Alt. 158.38 m
 Org. 3 NO.4
 G.W. GL.- 10.04 m



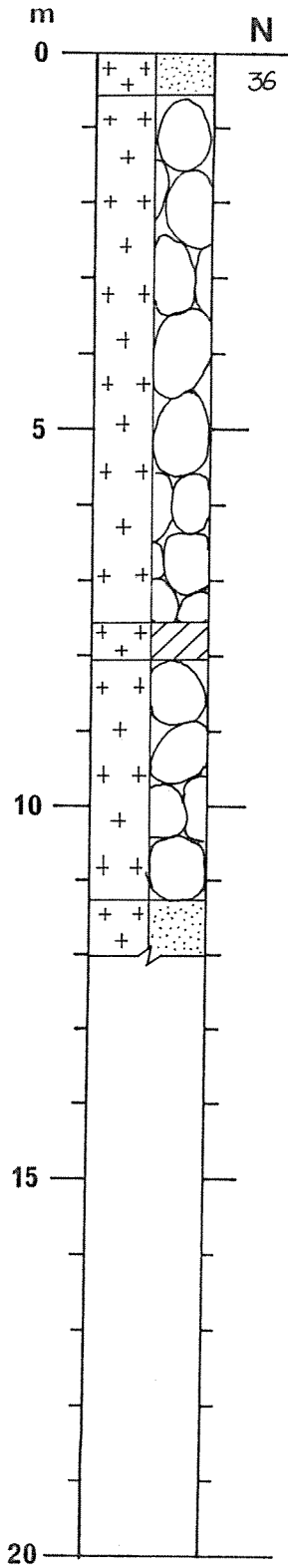
Mesh F 5
 Bo. 1
 Alt. 197.10 m
 Org. 4 NO.1
 G.W. GL.- m



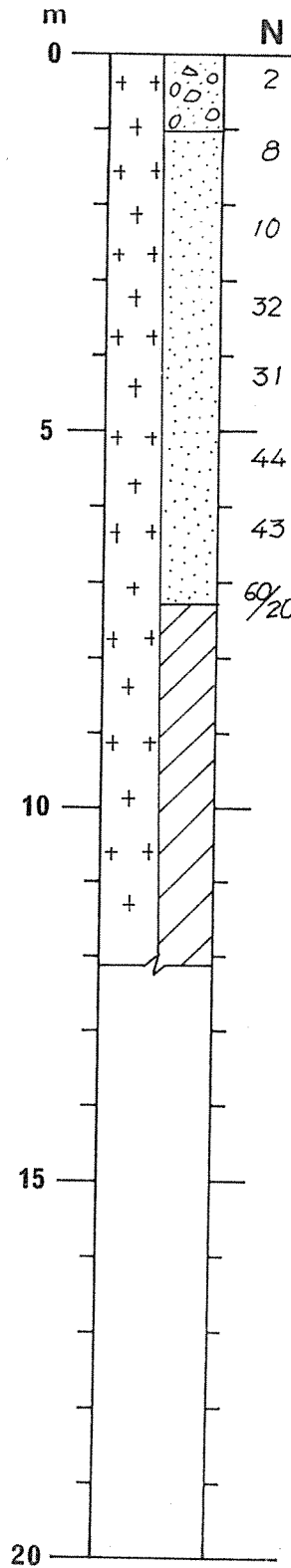
Mesh F 5
 Bo. 2
 Alt. 193.60 m
 Org. 4 NO.2
 G.W. GL.- m



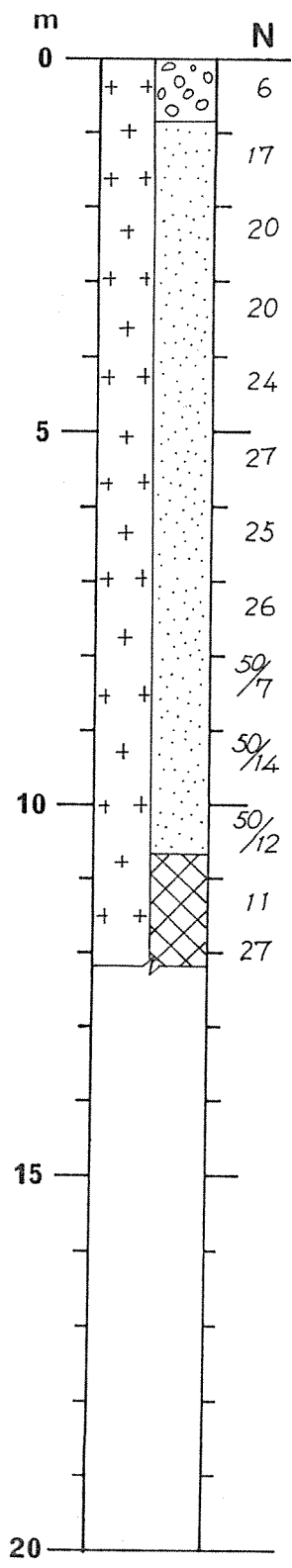
Mesh F 6
 Bo. 1
 Alt. 205.34m
 Org. 16 NO.1
 G.W. GL.- m



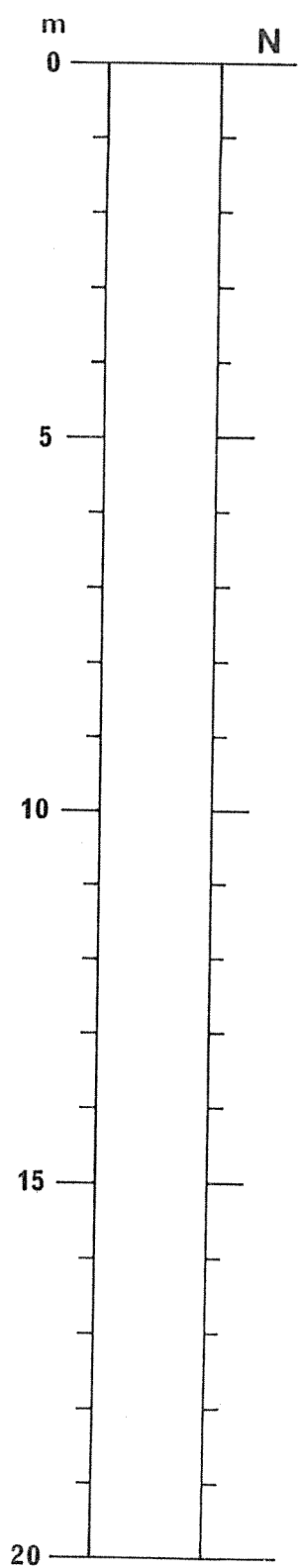
Mesh F 6
 Bo. 2
 Alt. 197.84m
 Org. 16 NO.2
 G.W. GL.- m



Mesh F 6
 Bo. 3
 Alt. 199.21^m
 Org. 16 NO.3
 G.W. GL.- m

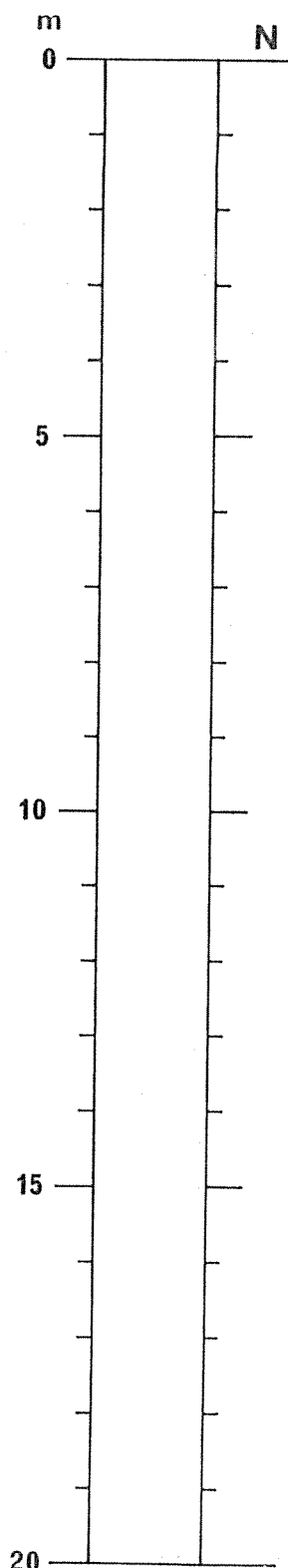
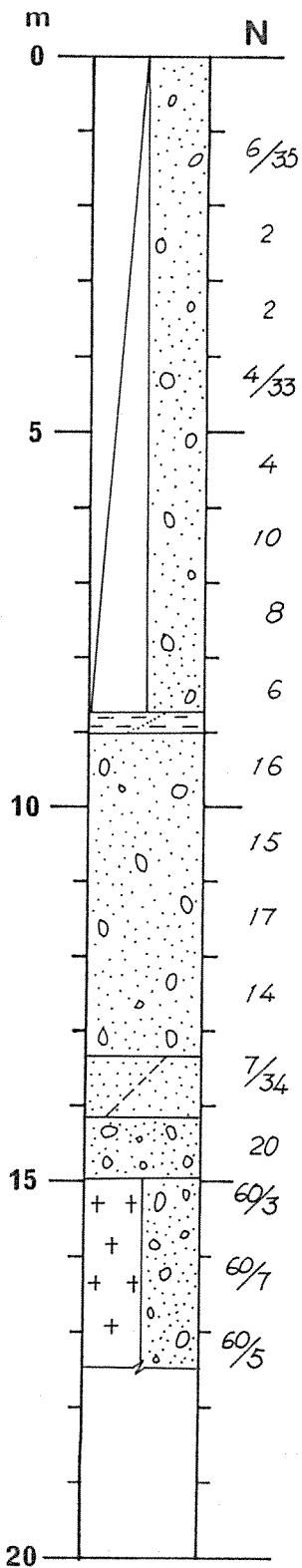


Mesh _____
 Bo. _____
 Alt. _____
 Org. _____
 G.W. GL.- m

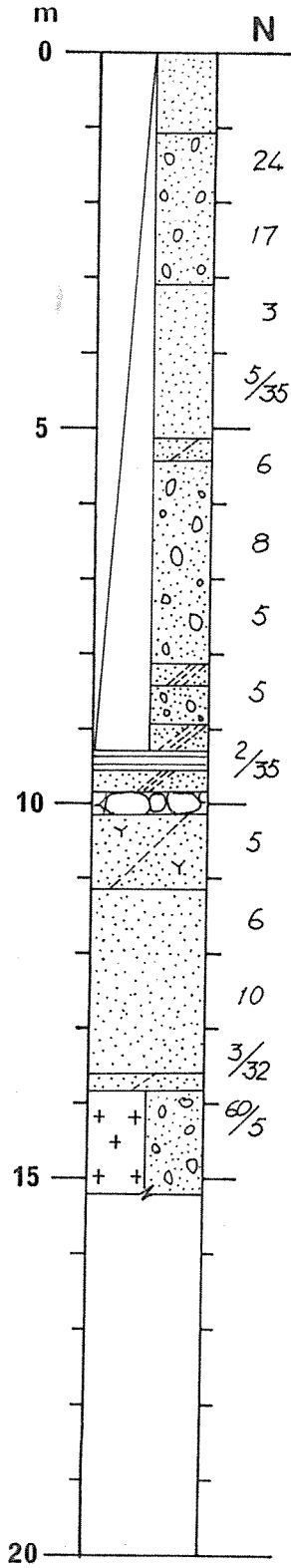


Mesh F 7
 Bo. 1
 Alt. 167.33m
 Org. 3 NO.1
 G.W. GL.- 3.70 m

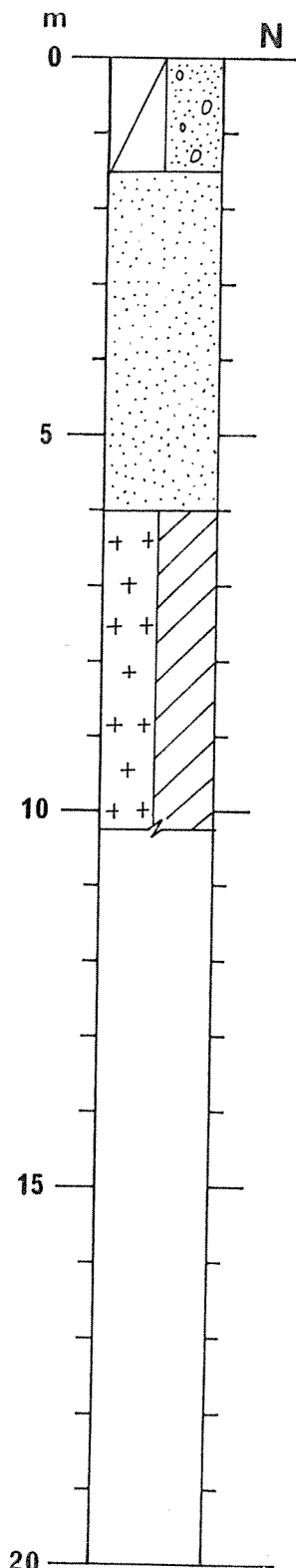
Mesh
 Bo.
 Alt.
 Org.
 G.W. GL.- m



Mesh F 8
 Bo. 1
 Alt. 163.32 m
 Org. 3 NO.2
 G.W. GL.- 1.82 m

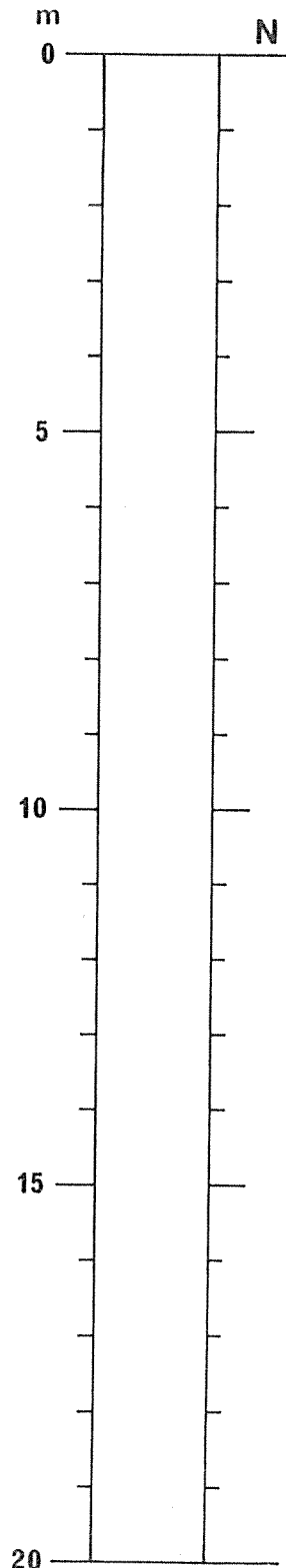
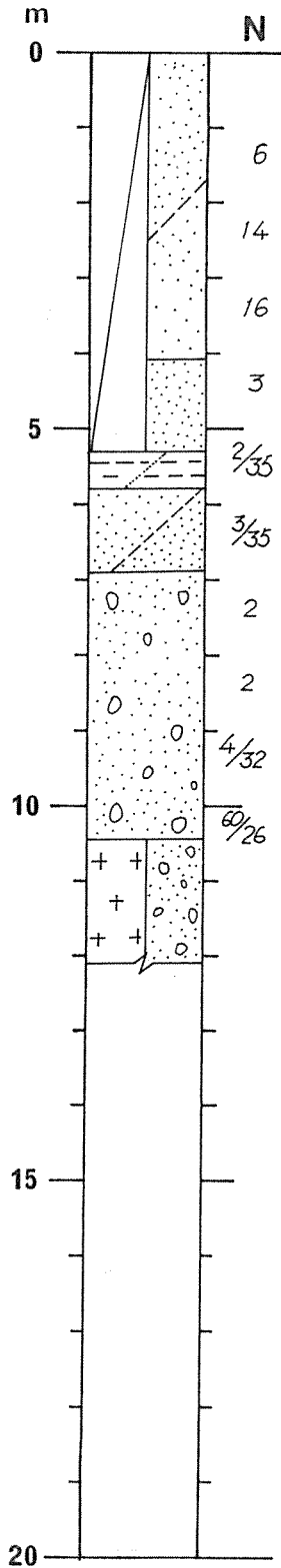


Mesh F 8
 Bo. 2
 Alt. 163.25 m
 Org. 13 NO.1
 G.W. GL.- 8.45 m



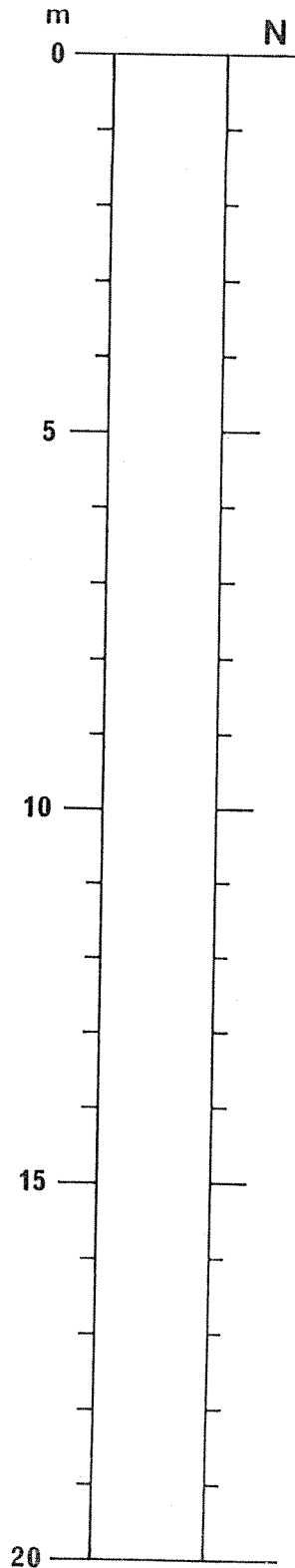
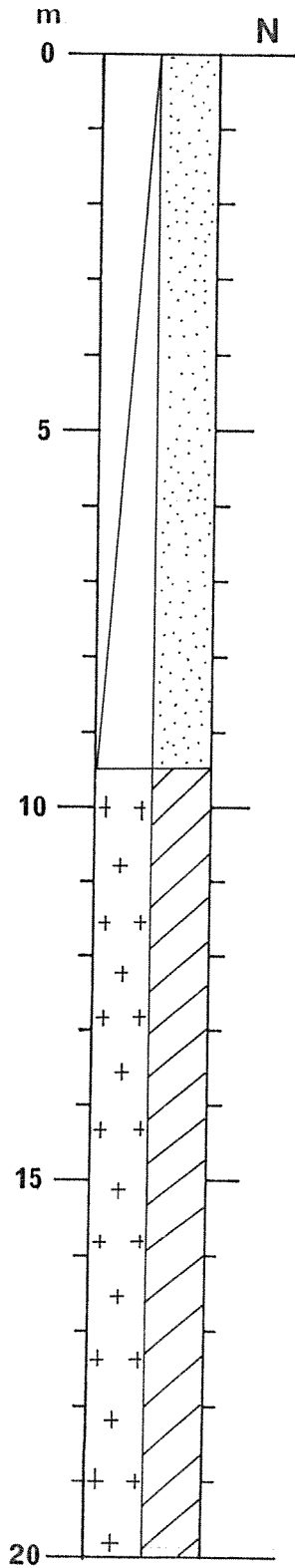
Mesh F 8
 Bo. 3
 Alt. 166.42^m
 Org. 3 NO.3
 G.W. GL.- 3.63 m

Mesh
 Bo.
 Alt.
 Org.
 G.W. GL.- m

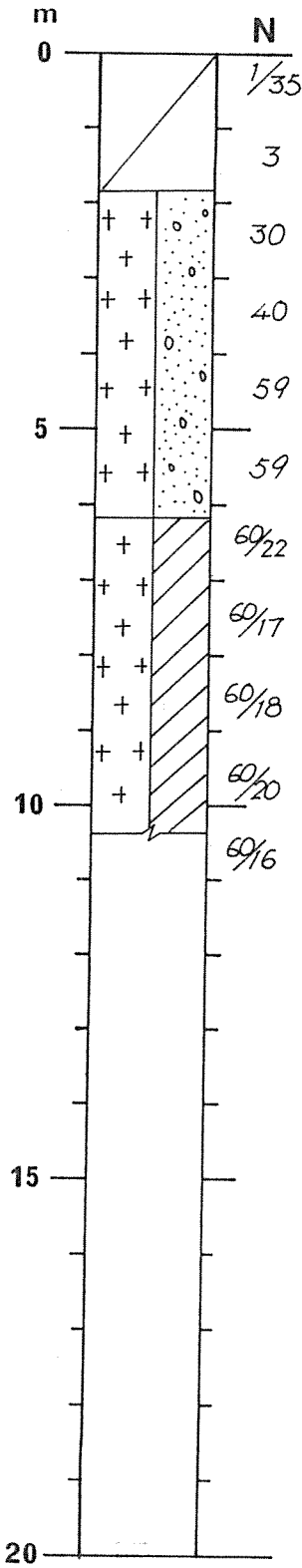


Mesh G 6
 Bo. 1
 Alt. 176 m
 Org. 9 NO. 3
 G.W. GL.- 6.05 m

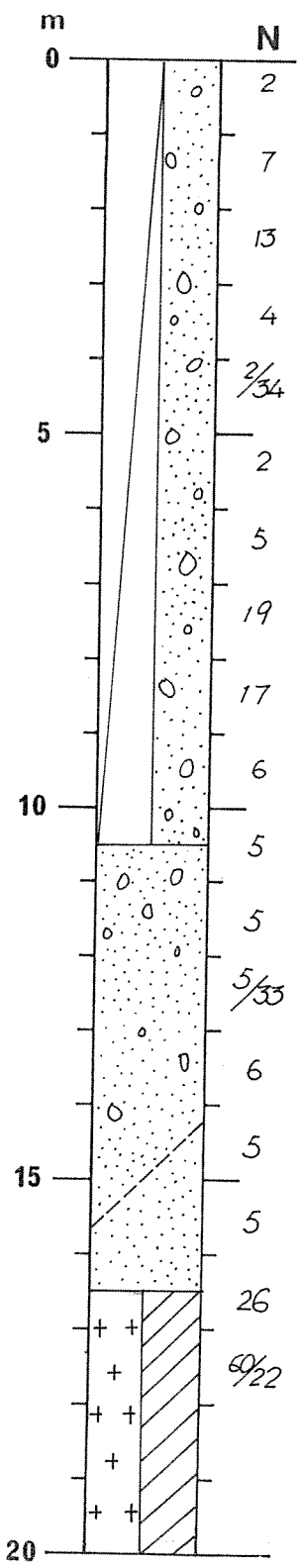
Mesh
 Bo.
 Alt.
 Org.
 G.W. GL.- m



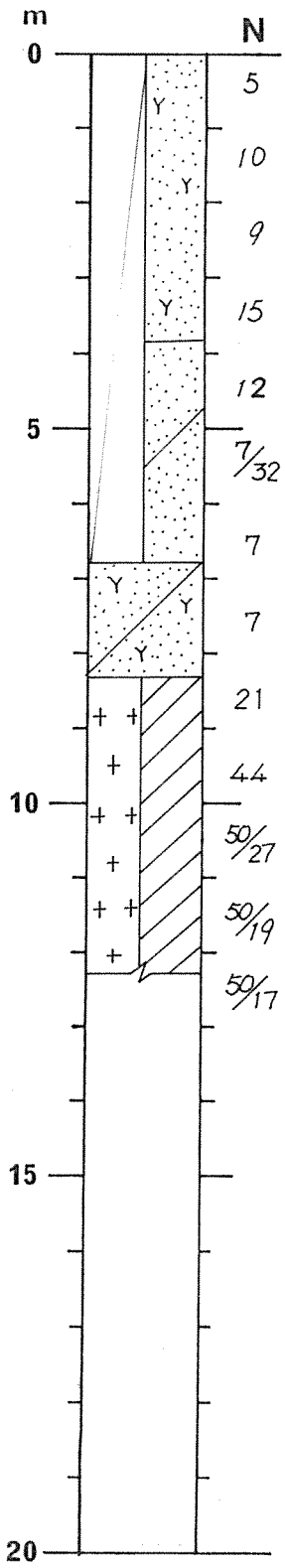
Mesh H 6
 Bo. 1
 Alt. 178.56 m
 Org. 1 NO. 5
 G.W. GL.- m



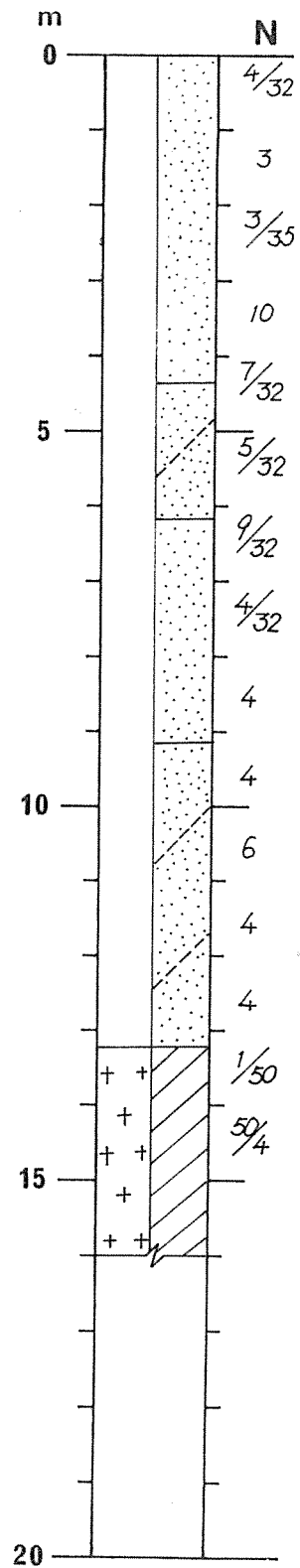
Mesh H 6
 Bo. 2
 Alt. 176.08 m
 Org. 1 NO. 6
 G.W. GL.- 12.05 m



Mesh H 8
 Bo. 1
 Alt. 173.91m
 Org. 14 NO.2
 G.W. GL.- 6.10 m

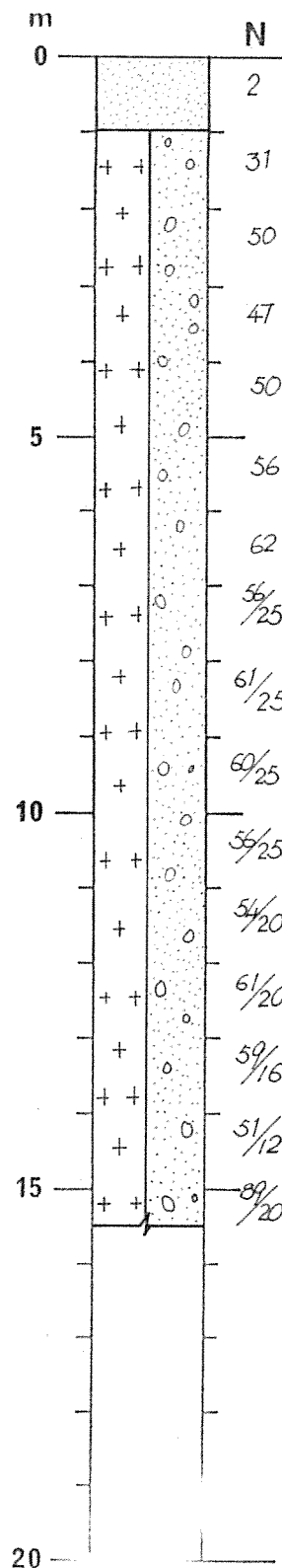
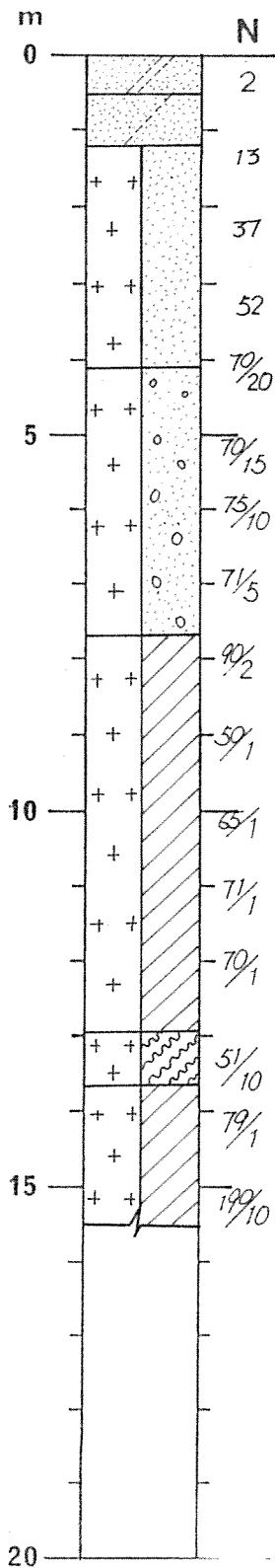


Mesh H 8
 Bo. 2
 Alt. 171.43m
 Org. 14 NO.1
 G.W. GL.- 8.30 m

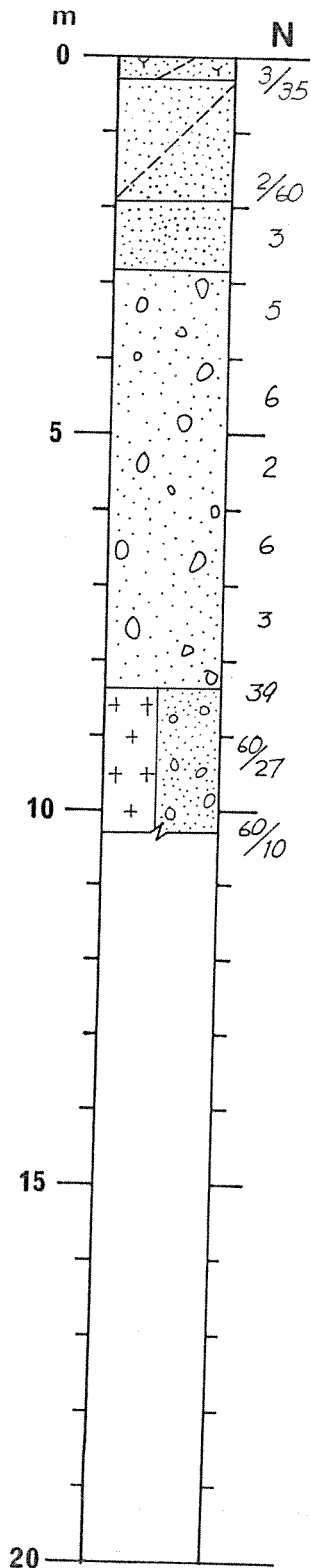


Mesh H 9
 Bo. 1
 Alt. 151.60 m
 Org. 5 NO.1-1
 G.W. GL.- m

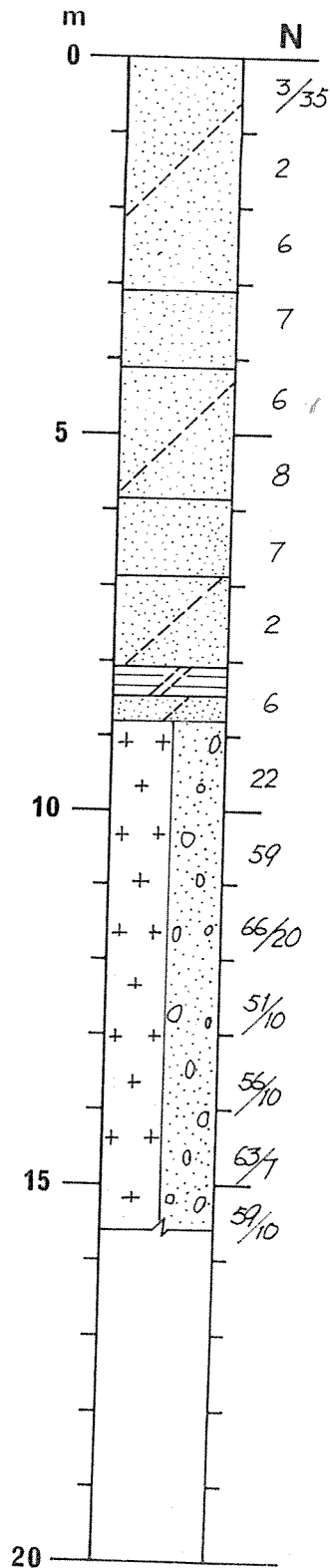
Mesh H 9
 Bo. 2
 Alt. 150.80 m
 Org. 5 NO.1-2
 G.W. GL.- m



Mesh H 10
 Bo. 1
 Alt. 145.15^m
 Org. 4 NO.1 (7 区)
 G.W. GL.- 0.40 m

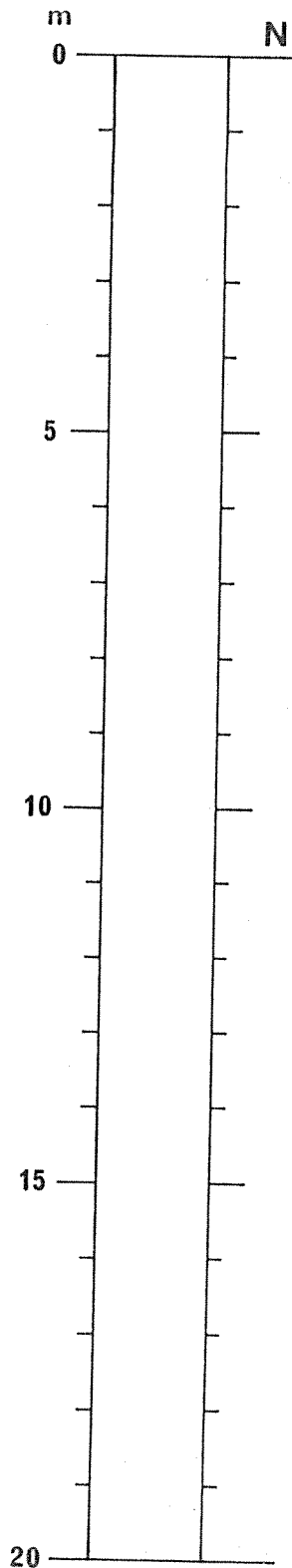
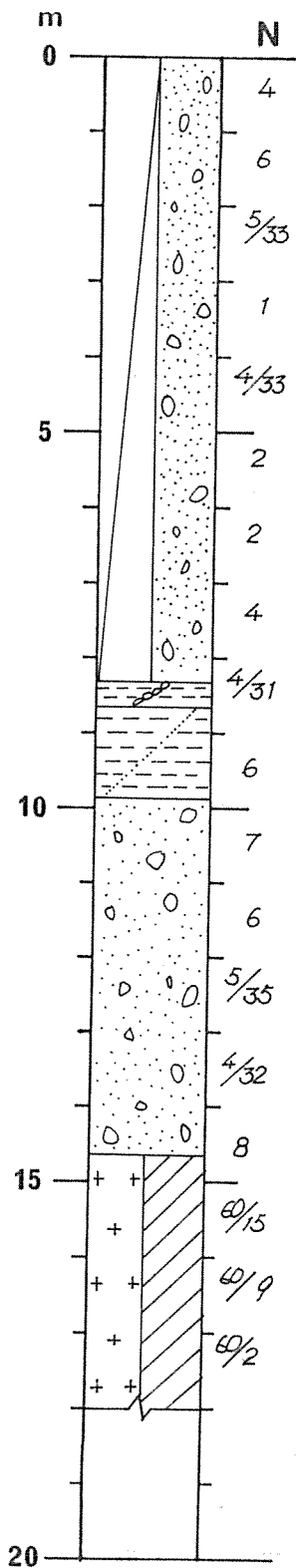


Mesh H 10
 Bo. 2
 Alt. 147.60^m
 Org. 5 NO.1-3
 G.W. GL.- 2.50 m



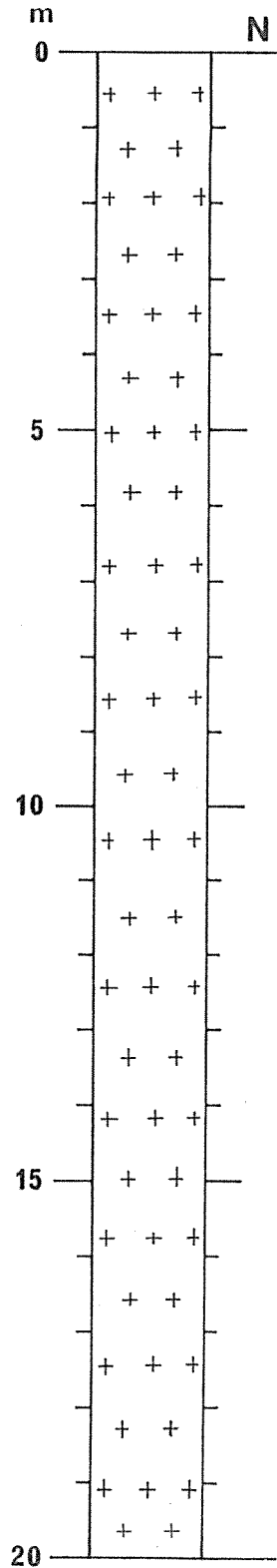
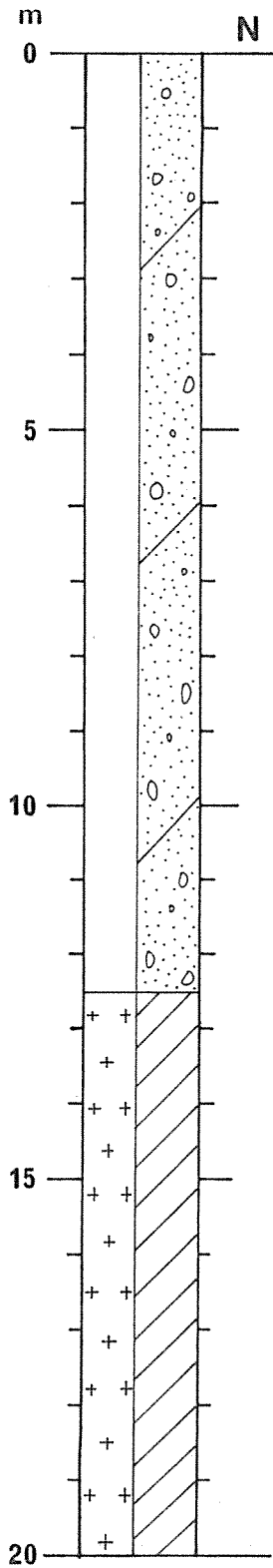
Mesh I 6
 Bo. 1
 Alt. 168.73^m
 Org. 1 NO. 7
 G.W. GL.- 5.20 m

Mesh _____
 Bo. _____
 Alt. _____
 Org. _____
 G.W. GL.- _____ m

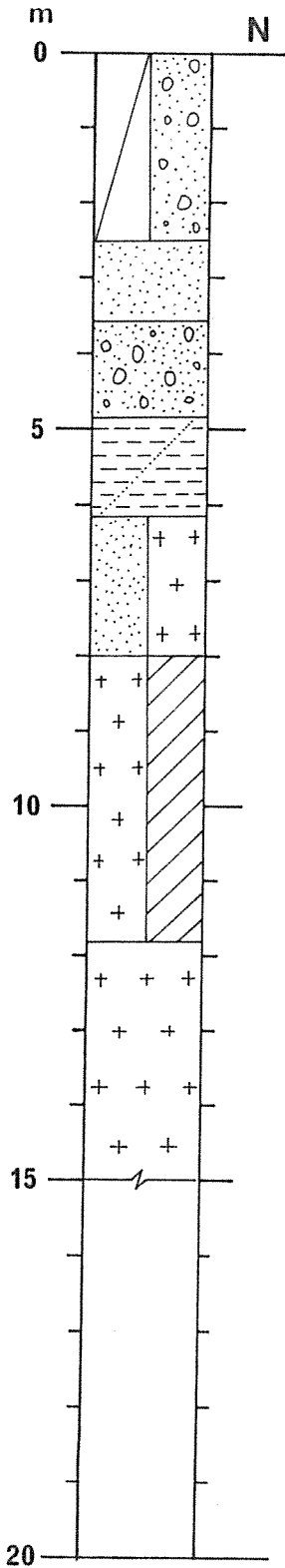


Mesh I 6
 Bo. 2
 Alt. 167m
 Org. 9 NO.2
 G.W. GL.- 9.03 m

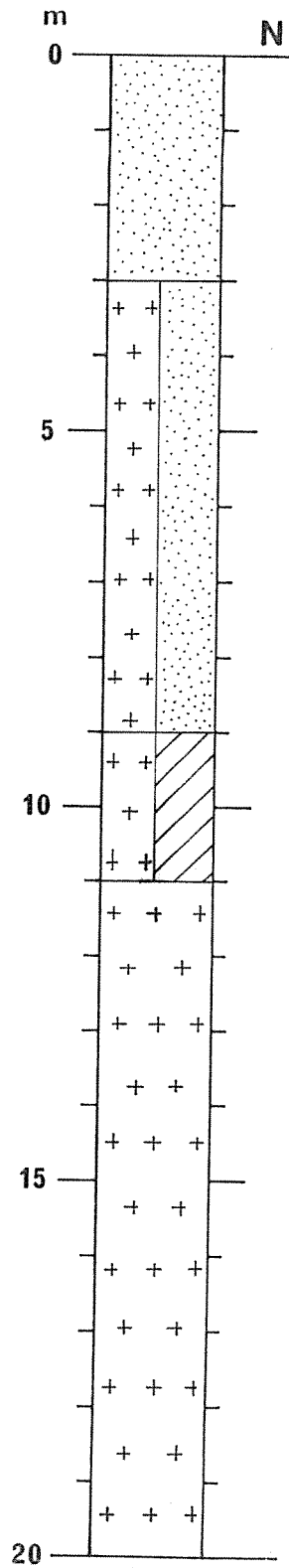
Mesh
 Bo.
 Alt.
 Org.
 G.W. GL.- m



Mesh 1 7
 Bo. 1
 Alt. 160.13 m
 Org. 1 NO.8
 G.W. GL.- 3.20 m

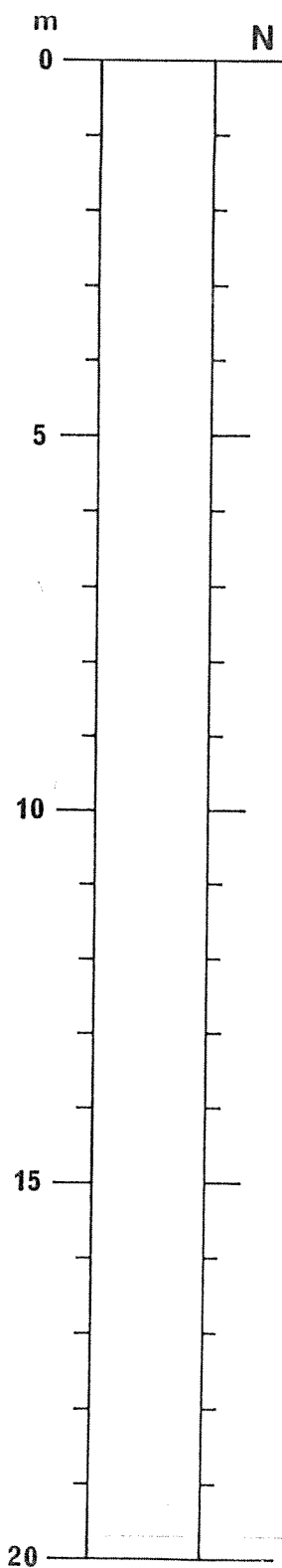
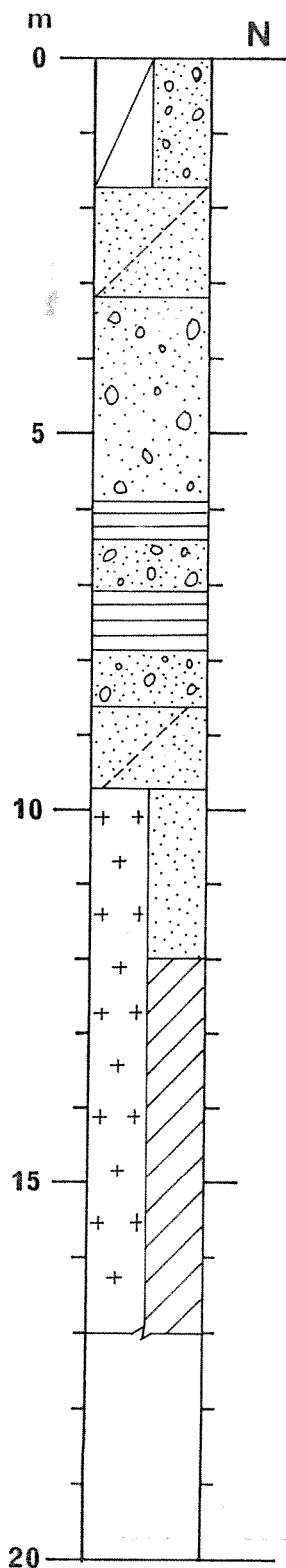


Mesh 1 7
 Bo. 2
 Alt. 159 m
 Org. 9 NO.1
 G.W. GL.- 4.75 m

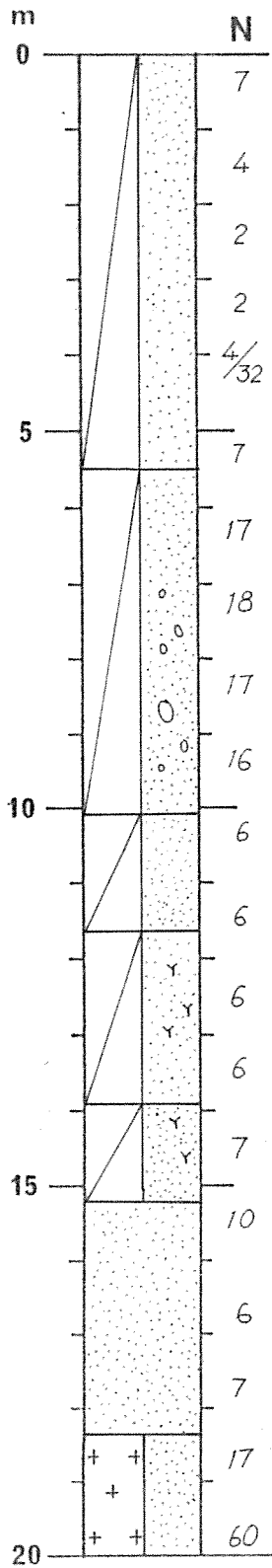


Mesh I 7
 Bo. 3
 Alt. 157.25 m
 Org. 1 NO.9
 G.W. GL.- 0.23 m

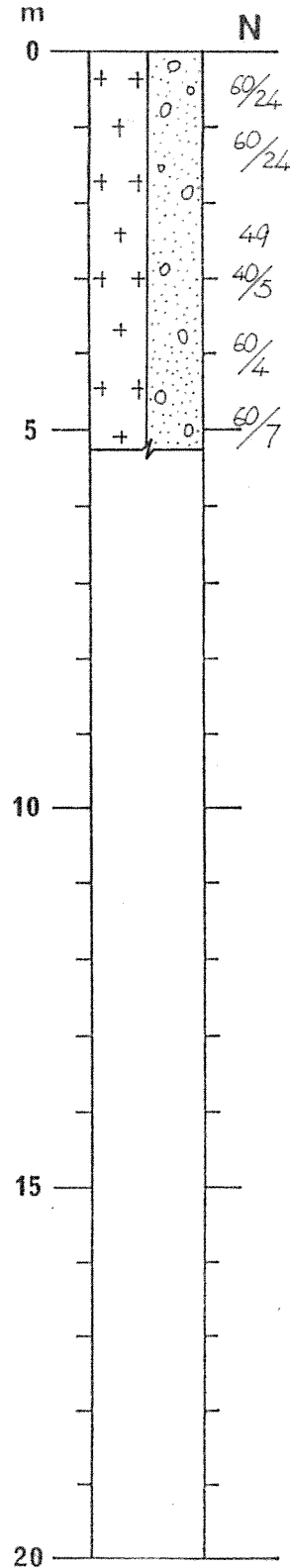
Mesh
 Bo.
 Alt.
 Org.
 G.W. GL.- m



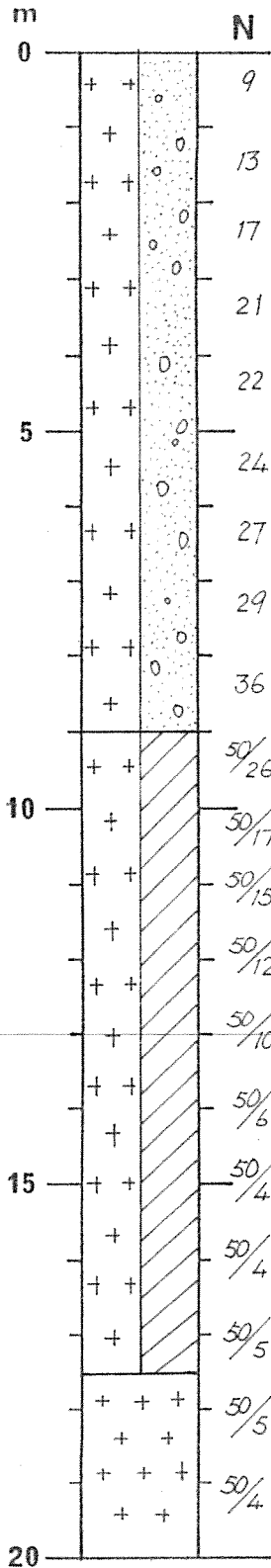
Mesh I 8
 Bo. 1
 Alt. 166.19 m
 Org. 6 NO.5
 G.W. GL.- 8.60 m



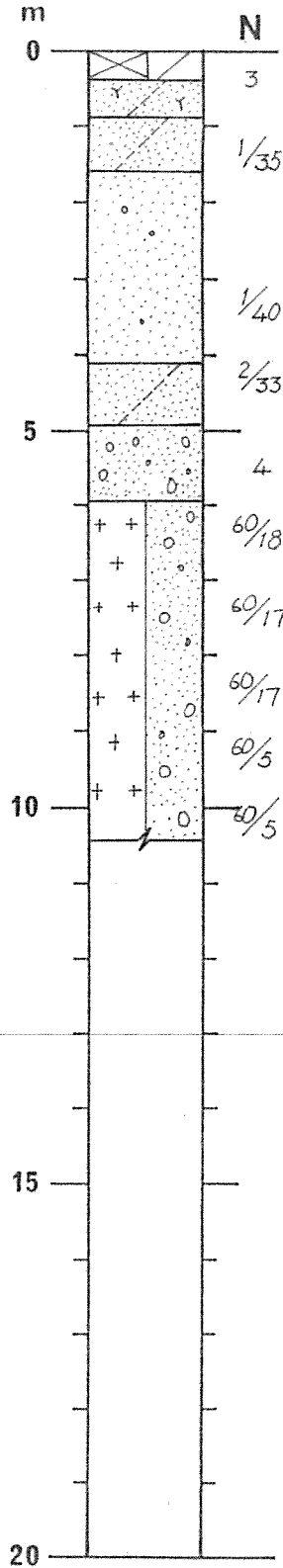
Mesh _____
 Bo. _____
 Alt. _____ m
 Org. _____
 G.W. GL.- _____ m



Mesh 1 8
 Bo. 2
 Alt. 177.23 m
 Org. 6 NO.6
 G.W. GL.- m

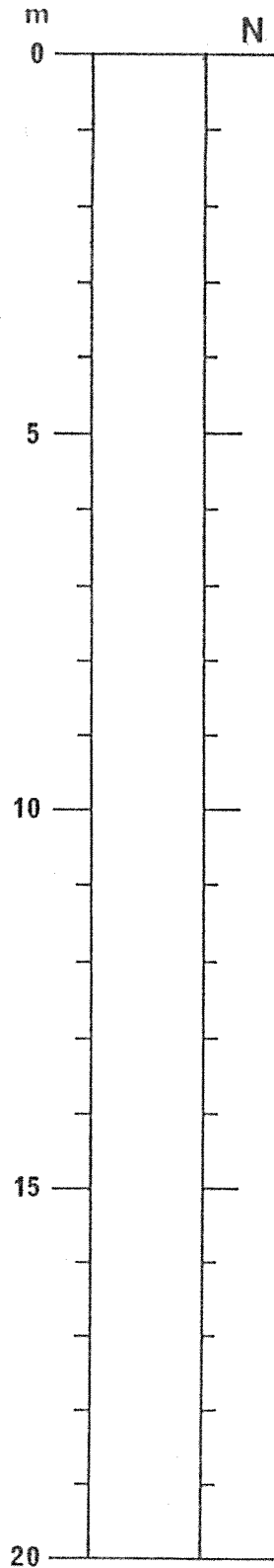
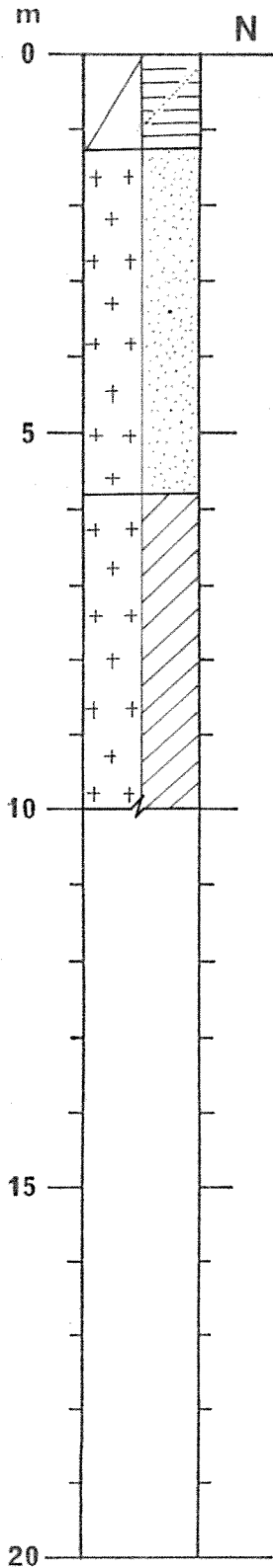


Mesh 1 8
 Bo. 3
 Alt. 154.45 m
 Org. 6 NO.9
 G.W. GL.- 0.15 m



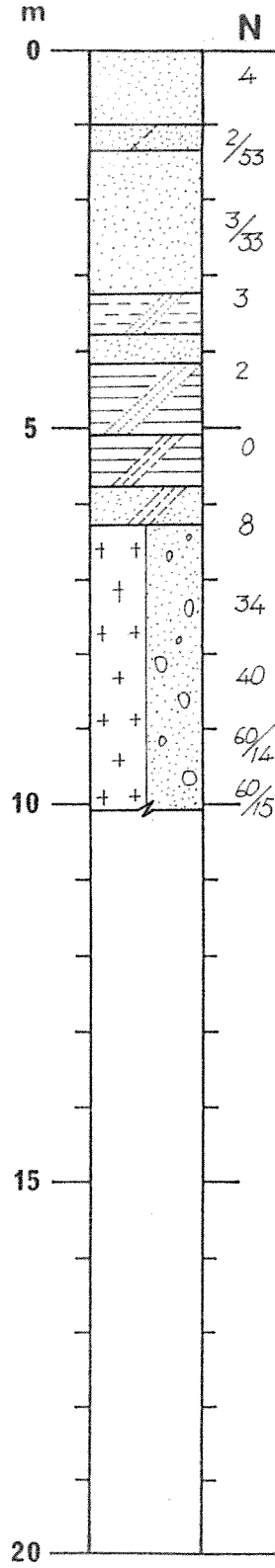
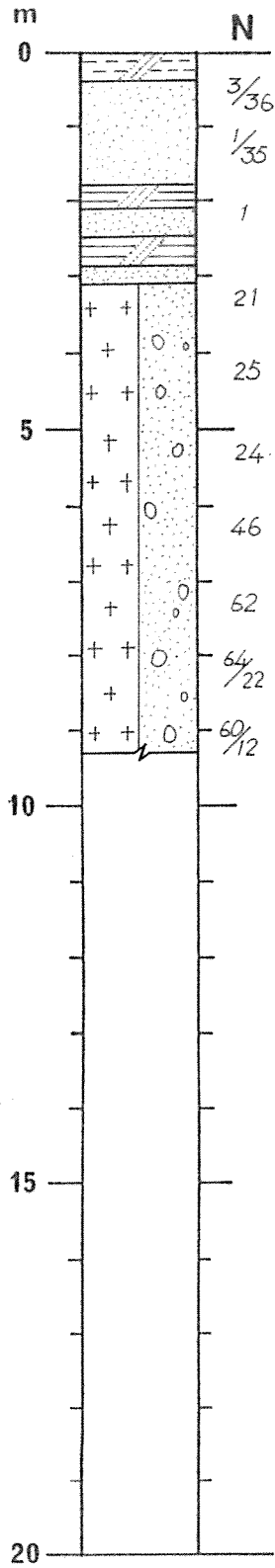
Mesh 1 8
 Bo. 4
 Alt. 155.3 m
 Org. 9 NO.4
 G.W. GL.- 1.50 m

Mesh _____
 Bo. _____
 Alt. _____ m
 Org. _____
 G.W. GL.- _____ m

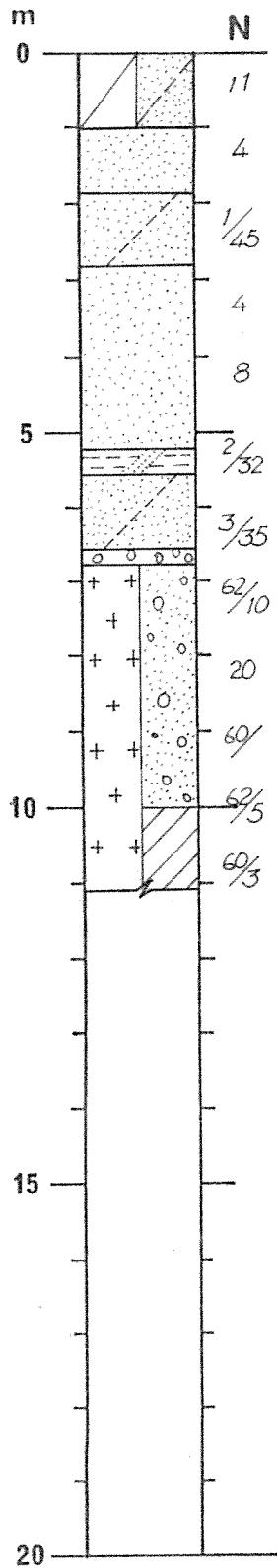


Mesh 1 9
 Bo. 1
 Alt. 148.19 m
 Org. 2 NO.8-3
 G.W. GL.- 2 75 m

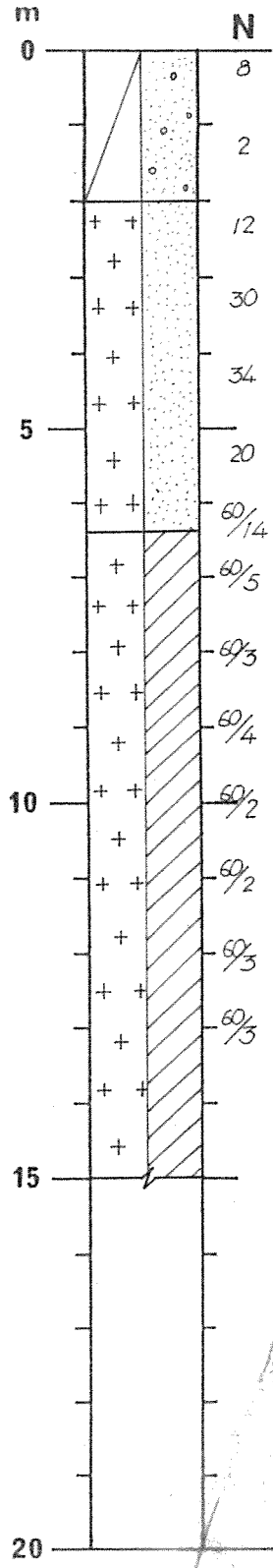
Mesh 1 9
 Bo. 2
 Alt. 146.73 m
 Org. 2 NO.8-2
 G.W. GL.- m



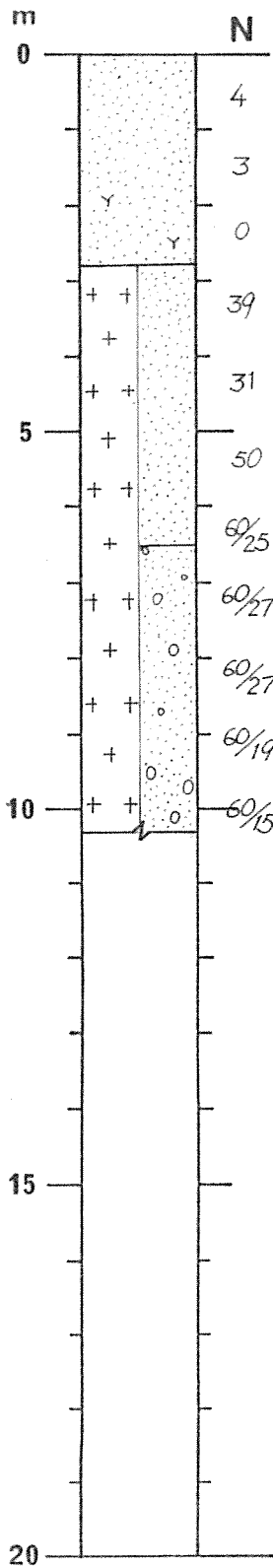
Mesh 1 9
 Bo. 3
 Alt. 147.55 m
 Org. 2 NO.8-1
 G.W. GL.- m



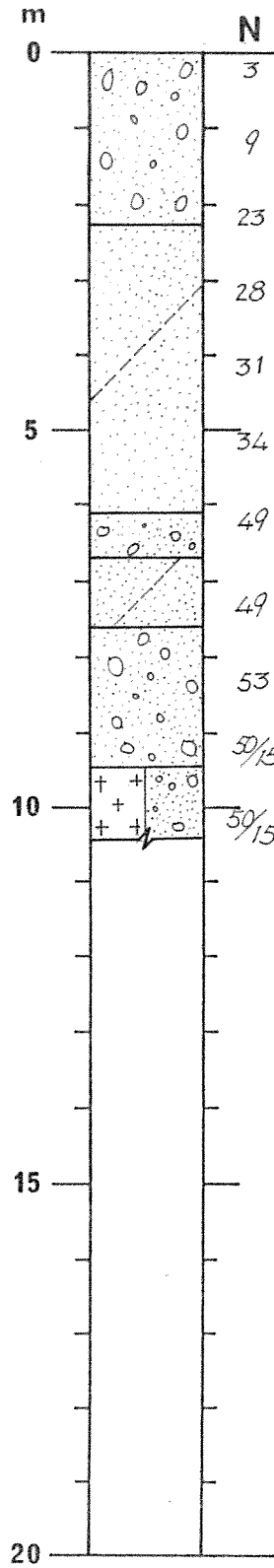
Mesh 1 9
 Bo. 4
 Alt. 149.90 m
 Org. 6 NO.8
 G.W. GL.- 1.76 m



Mesh J 8
 Bo. 1
 Alt. 16 273 m
 Org. 6 NO.7
 G.W. GL.- 1.70 m

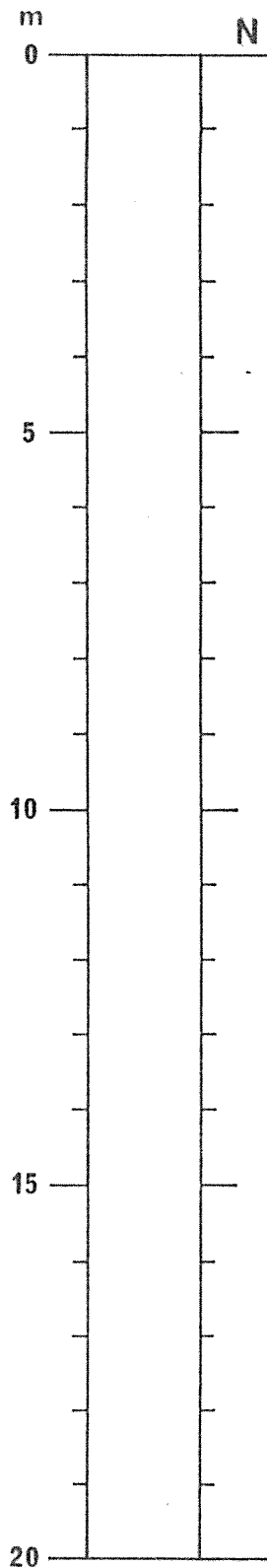
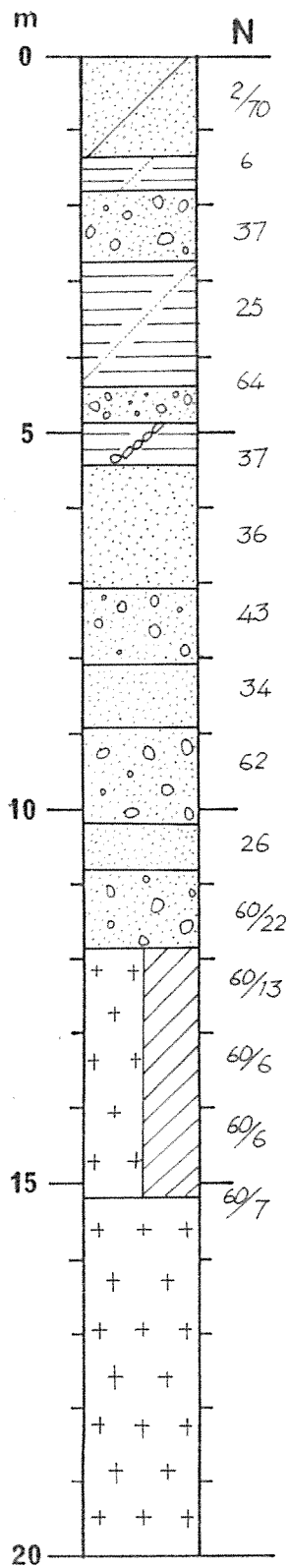


Mesh J 8
 Bo. 2
 Alt. 161.82 m
 Org. 6 NO.12
 G.W. GL.- 4.90 m



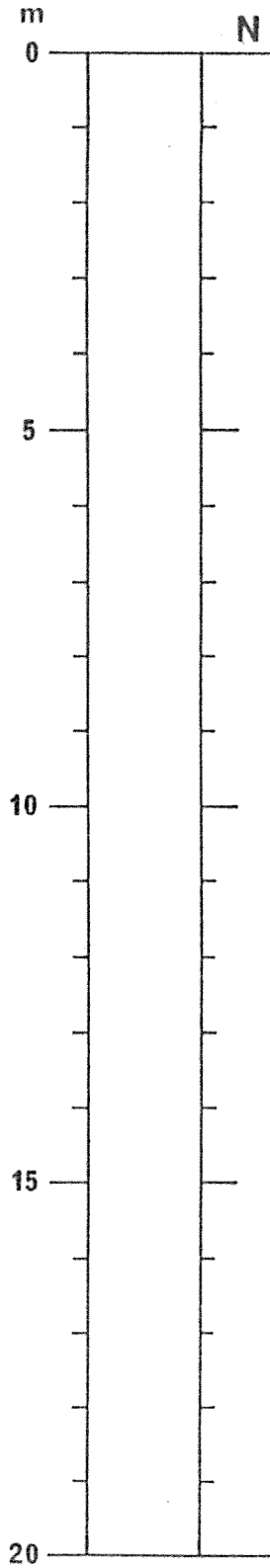
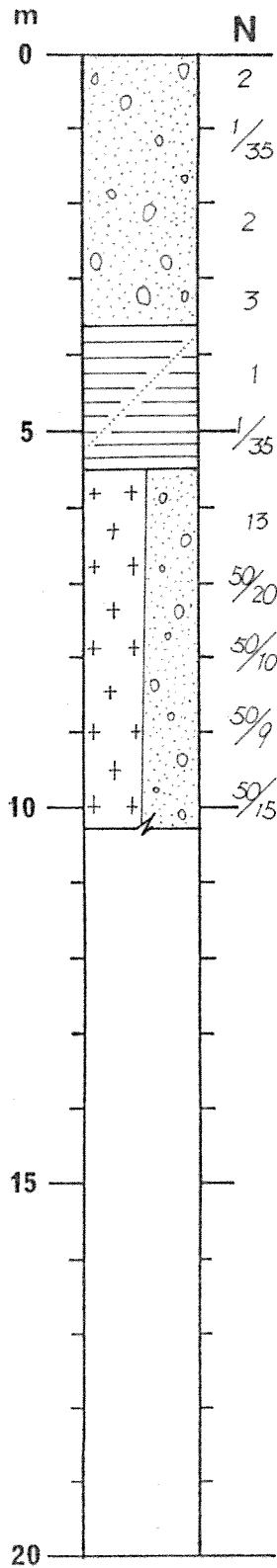
Mesh J 8
 Bo. 3
 Alt. 164.12 m
 Org. 1 NO.11
 G.W. GL.- 6.00 m

Mesh
 Bo.
 Alt. m
 Org.
 G.W. GL.- m



Mesh J 9
 Bo. 1
 Alt. 154.77 m
 Org. 6 NO.11
 G.W. GL.- 0.40 m

Mesh
 Bo.
 Alt. m
 Org.
 G.W. GL.- m



Mesh K 7
 Bo. 1
 Alt. 149.61 m
 Org. 1 NO 10
 G.W. GL.- 2.75 m

Mesh
 Bo.
 Alt. m
 Org.
 G.W. GL.- m

